

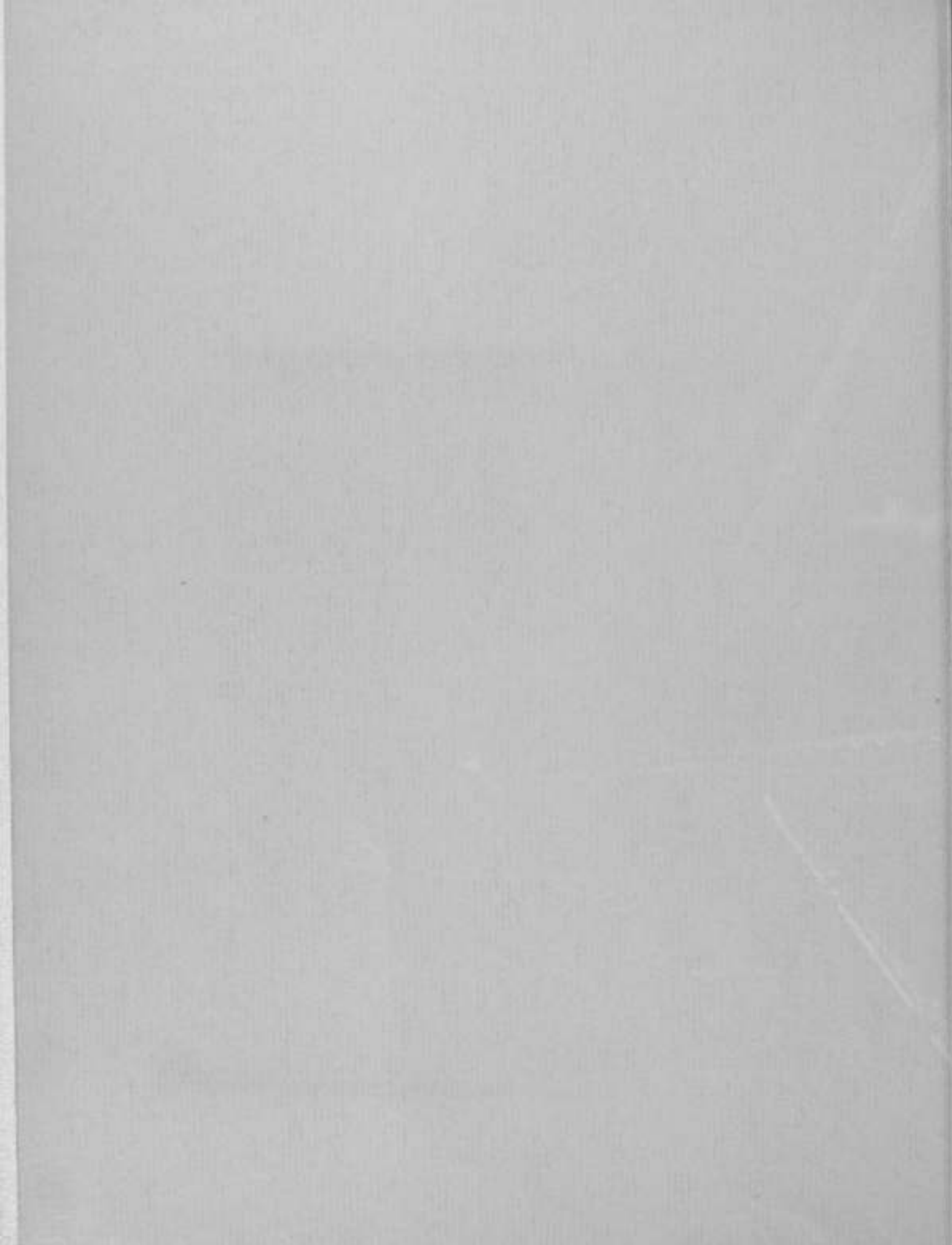
The image features a central graphic design on a light-colored background. The design consists of a dark blue, stylized shape that resembles a cross or a four-pointed star with rounded, pointed ends. This shape is filled with a lighter blue color and contains several white, rounded rectangular areas. The year '1965' is printed in a dark blue, sans-serif font within one of these white areas. Below this, the word 'MESIKA' is printed in a larger, bold, dark blue, sans-serif font, centered within a wider white horizontal band. The overall aesthetic is minimalist and modern, characteristic of mid-20th-century graphic design.

1965

MESIKA

To Aunt Anita
from
Anita Jean







Meadowdale Senior High School
Lynnwood, Washington
MESIKA, 1965

Meadowdale High School On The Move . . .



Physically . . .

The students of M.H.S.,
numbering over 1200,
are its foundation, its
supporters, its very roots—

rushing,

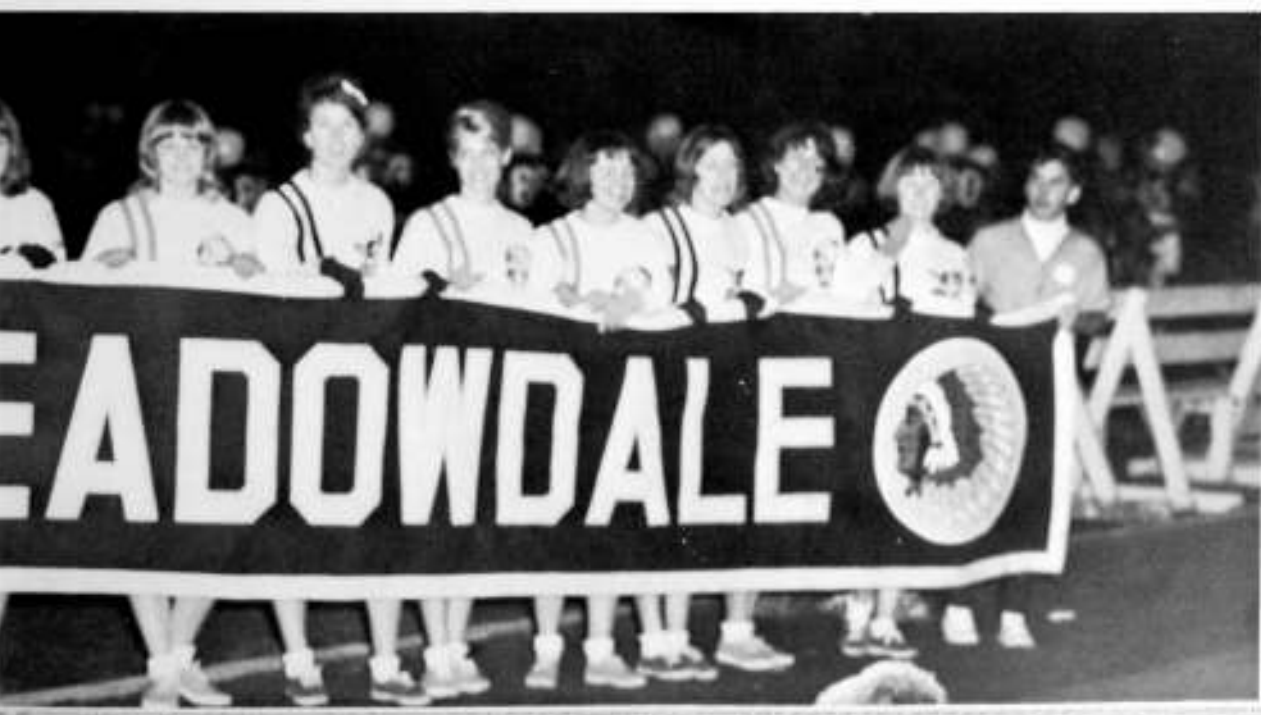


rambling,

moving

onward.





Academically . . .



The core of MHS is the staunch
academic fiber of its administrators, teachers,
classrooms and laboratories.





Developmentally

Branching from the academic trunk of the school are varied activities prompting individual growth and movement—budding, ripening, blossoming self-development in citizenship, talent, and athletics.

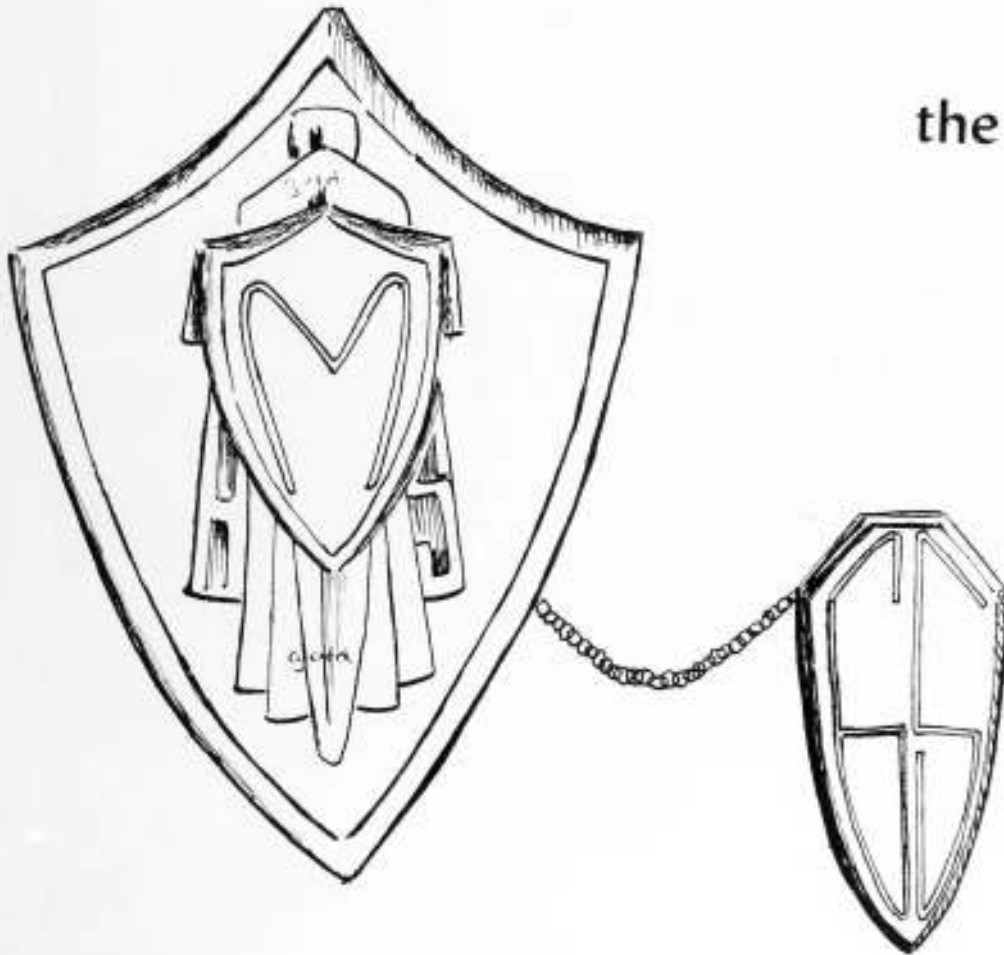


Seniors

on

the

move . . .



For the seniors, these past two years have been filled with activities, decisions, and problems that can confront only a new high school.

Students from several different high schools were transplanted into a new environment; an environment which needed unity and participation to make Meadowdale academically and socially complete. This school required students that were willing to accept the challenges and responsibilities needed to establish traditions and set standards.

The seniors accepted these responsibilities and strove

for a common goal: to create a high school that thrives on the enthusiasm of the entire student body.

Athletically the Senior class has contributed its talents to achieve success that is rarely seen in a new high school. The victories earned by these aggressive Seniors have brought recognition and respect to M.H.S.

Due to your initiative and achievements the members of the yearbook staff wish to dedicate to you, the first graduating class of Meadowdale Senior High, the 1965 MESIKA.







ARETTA ADAMS

A.S.B. Rep. 3
Choir 4
Chorus 3
Firewater 4
I.R.L. 3,4

MARTYN ADAMS

Ski Club 3,4
Radio Club 4
Intramurals 2

BRAD AKERS

Boys' Club

CHARLES ALDRICH

Boys' Club Rep. 2

CAROL ANDERSON

A Wedding 3
Tato Comm. 4
Drama Club 3
Debate 4
A.S.B. Comm. 4



DIANE ANDERSON

Drill Team 3,4
D.T. Co-Captain 4
G.A.A. 2,3
Ski Club 4
Firewater 4



DONN ANDERSON

Orchestra 2,3,4
N.H.S. Optimus 3,4



GLORIA ANDERSON

G.A.A. 3



JOAN ANDERSON

Chorus 2,3
I.R.L. 3,4
Tato Comm. 4
Girls' Club Comm. 3,4

KERRIE ANDERSON

Girls Club Rep. 2
G.A.A. 2

MARY ANDERSON

BECKI ANDREWS

Trans. from Terrace 4
Firewater 4
I.R.L. 4
F.T.A. 4
Girls' Club Comm. 4

MARIAN ANDREWS

Girls' Club Rep. 3
Dist. Ed. 4

MAL ARMSTRONG

Impressions 3,4
Choir Council 4
Choir 2,3,4
Ski Club 4

MARION ARMSTRONG

N.H.S. Optimus 3,4
Drama Club 4
Firewater 4
G.A.A. 2,3,4

CHARLES AUSTIN

Football 3,4
Varsity Club 3,4
Wrestling 2,3,4
Track 3,4
Boys' Club Rep. 3

GUY AXELSON





PERI AXNESS
 MESKA Editor 3,4
 Quill and Scroll 4
 Leadership Conf. 4
 Ski Club 3,4
 Firewater 4



TIM BAEKEL



LESLIE BALSLEY
 Girls' Club Rep. 3
 Tolo Comm. 4
 G.A.A. 2,3
 Girls' Club Comm. 4



PAUL BARBEAU
 Orchestra 2,3,4
 Handball 2,4
 Baseball 4

DAVE BARRENS
 Choir Pres. 3,4
 Choir 2,3,4
 Impressions 3,4
 Band 3,4
 Stage Crew 2,3,4

LORI BARRETT
 Drill Team 3,4
 D.T. Captain & Co-cap
 Firewater 4
 Pep Club 3

JEAN BARROWS
 N.H.S. Optimus 3,4
 Girls' Club Rep. 2,3
 Drama Club 2
 Drill Team 3
 Firewater 4

FRED BARTLETT
 Varsity Club 3,4
 Cross Country 2,3,4
 Track 2,3,4

BOB BAUMGARTNER
 Baseball 3,4
 Boys' Club Rep. 3

PAUL BEALS
 CHIEFTAIN 4
 Track 2,3,4
 F.T.A. 3,4
 Senior Board 4
 Firewater 4

RICHARD BEARD
ROBERT BEARD
 A.S.B. Rep. 4



LYNN BECKHORN

LESLIE BINGHAM
 Junior Class Sec. 3
 Student Council 3
 Discipline Council 3
 Tolo General Chairman 4
 Ski Club

RICK BJELLAND
 Band 2,3,4
 Choir 4
 Cross Country 2

SHERRY BLACKWELL
 Girls' Club Rep. 4
 Chorus 3
 G.A.A. 3,4
 I.R.L. 4
 F.T.A. 3

JUDY BLISS
 Girls' Club Rep. 4
 Hospitality Chmn. 3
 I.R.L. 3,4
 Tolo Comm. 4





BETH BONE

A.S.B. Treas. 3
Senior Class Treas. 4
N.H.S. Optimus 3,4
S.C.O.P.E. 3
Ski Club 3,4

MARCIA BROWN

Tennis 3,4
G.A.A. 3,4
Girls' Club Comm. 4
Firewater 4

JACK BURTON

Key Club Treas. 4
Head Track Mgr. 3,4
Usher 3,4
French Club 2

COLLEEN BOOKER

Girls' Club Rep. 3
D.E.C.A. 4
Bond 2
Student Store 3

RICH BROWN

Varsity Club 3,4
Cross Country 3,4
Wrestling 3,4
Track 4
CHIEFTAIN 3,4

CAROL BUSCHMAN

N.H.S. Optimus 3,4
MESIKA Layout Ed. 3,4
Senior Board 4
Quill and Scroll 4
A.S.B. Rep. 4

MAUREEN BOYLE

G.A.A. 2,3,4
Tennis 3,4
Firewater 4
Tolo Comm. 4

SHARON BROWN

F.B.L.A. 2
Tolo Comm. 4
G.A.A. 2
Firewater 4
Coll. Room Comm. 4

DARRELL BYLSMA

Basketball 3
Cross Country 3

DENNIS BRANDT

Varsity Club 3,4
Football 3,4
Impressions 3
Wrestling 3,4
Chair 3,4

SHEILA BROWN

Student Council 4
MESIKA 3
Student Standards Comm. 4
Tennis 3
Ski Club 2,3

JUDY CAMPBELL

Impressions 3,4
Chair 3,4
I.R.L. 3,4
Drama Club 3
A Wedding 3

CAROL BROOKS

Letterwomen Pres. 4
Program Chmn. 4
Banquet Chmn. 4
Letterwomen Treas. 3
Parents' Night Chmn. 3

SID BURNS

Limelights 2
Chorus 3
Chair 3,4

KATHY CAMPBELL

Firewater 4
Girls' Club Comm. 3





LIZ CAMPBELL
Girls' Club Rep. 4
I.R.L. 3,4
Pep Club 3
Firewater 4
Tolo Comm. 4



SANDRA CAMPBELL
Poster Comm. 4



JAN CANFIELD
Drill Team 4
Firewater 4
I.R.L. 4
Girls' Club Comm. 4



LINDA CARRICK
MESIKA 3
MESIKA Bus. Mgr. 4
Firewater 4
Echo 2
Quill and Scroll 4



JOHN CESSARINI
Wrestling 2,3,4
Cross Country 2
MESIKA 3,4
Service Club 3,4
Intramurals 2,4



BARBARA CEIS
Ski Club 3,4
I.R.L. 3,4
Christmas Play 2
Orchestra 2

GEORGE CHRIST
Boys' Club Rep. 2,3
A.S.B. Rep. 2,3
Football 2,3
Wrestling 2,3,4

PETER CLARK
A.S.B. Rep. 3,4
Boys' Club Rep. 2,3
Ski Club 2,4
Drama Club 3
A Wedding 3

RAY CLARY
Basketball 3

JIM COAN
Boys' Club V.P. 4
Boys' Club Treas. 3
Varsity Club 2,3,4
Football 2,3,4
Basketball 2,3,4

PATTI COGSWELL
Girls' Club Rep. 4
Firewater 4
I.R.L. 4
Girls' Club Comm. 4

JANICE COHAGEN

JEANNETTE COLBY
Chorus 2,3

MARY PAT CONNOR

SANDRA CORRIER
Girls' Club Rep. 3
Chor. 4
Chorus 3
Drama Club 4
F.T.A. 3,4

CONNIE COVILLE
Choir 3,4
F.T.A. 3,4
G.A.A. 3
Ski Club 4

CHERI COPP

DIANE CROSBY
A.S.B. Rep. 3
Chorus 2,3
Ski Club 2,3,4
G.A.A. 3,4





DAVE CRUZ
Band 2,3,4
Orchestra 2,3,4

WALLY CURTIS
A.S.B. Rep. 3
Basketball 3,4
Boys' Club Rep. 4



CAROL CYR
Choir 3,4

SHANNON DANIELS
Cross Country 4



CHRISTINE DAVIS
N.H.S. Optimus 3,4
A.S.B. Rep. 4
Ski Club 2,3,4
Letterwomen 4
I.R.L. 3,4

KATHY DAVIS
Chorus 3,4
Girls' Club Comm.



JIM DAWSON
N.H.S. Optimus 3,4
Orchestra 2,3,4

TERRY DAWSON

RON DROZDOWSKI
Basketball 4
Baseball 4
Intramurals 2,3,4

KATHY DUCKWORTH
Girls' Club Treas.
Letterwomen 3,4
G.A.A. 2,3,4
Choir 3,4
I.R.L. Treas. 3



LARRY DUFF
Choir 3,4
Impressions 3,4
Boys' Club Rep. 3
Band 2,3
Debate 4

GARY ECHOLS
Track 3
Firewater 4
Boys' Club Rep. 2



JIM ELLIOTT
HELEN EKES
Senior Board 4
Girls' Club Rep. 4
MESIKA Ass't Ed. 3
Chorus 3
Letterwomen 4



LINDA ELLSWORTH
MESIKA 3
Tolo Comm. 3,4
Girls' Club Comm. 3,4
Ski Club 3,4
Firewater 4

DAN ERNST
JERRY ERNST

RAY EWING
Junior Class Pres. 3
Varsity Club 3,4
Football 3,4
Basketball 3,4
Baseball 3,4

DENNIS FAIRBANK
Band 2,3,4
Orchestra 2
Baseball 3,4
Cross Country 3

JEAN FERNEN





JEAN FERNEN

LINDA FORBES
I.R.L. 3,4
CHIEFTAIN 3,4



ROBBIE FOSSUM
Trans. from Terrace 4
Ski Club 2,3,4
Mother-Daughter Tea 3
G.A.A. 2,3

GARY FOX
Varsity Club 3,4
Football 2,4
Baseball 2,3,4



ALFRED GAGNON
Varsity Club 3,4
Football 3,4
Usher 3

JIM GANDY
N.H.S. Optimus 3,4
Key Club Pres. 3,4
Chess Club Pres. 3
N.M.S.Q.T. Semi-Fin. 4
Band 2,3,4
Orchestra 3,4



JOHN GATJENS
N.H.S. Optimus 3,4
Football 2,3,4
Cross Country 3
Intramurals 2

PAT GIBBENS
Letterwomen 4
Tolo Comm. 3
G.A.A. 2,3,4
Girls' Comm. 4

BOBBIE GILLIAM
Student Council 2,3
Girls' Club Comm. 4
Tolo Comm. 3,4
Firewater 4

MARILYN GLOVER
G.A.A. 2
Band 2,3
Girls' Club Comm. 3

BOB GOGERT
Football 2,3,4
Baseball 2

CHERYL GIACOLINO
Firewater 4
Tolo Comm. 4
Service Club 4
Girls' Club Comm.

LINDA GIEDT
I.R.L. 3,4
I.R.L. Dance Comm. 3
Girls' Tolo Comm. 4
Girls' Club Comm. 4
Firewater 4

ROSE MARIE GIZA
Distributive Ed. 4

CONNIE GOEBEL
Letterwomen 3,4
G.A.A. 2,3,4

LARRY GOLDSMITH
Band 2,3,4
Varsity 3,4
Tennis 3,4
Orchestra 2,3,4





NANCY GOTTSCHALK

I.R.L. 3
Chorus 4
Firewater 4



LEE GRAHAM

Boys' Club Rep. 2



PAM GRANDY

Tolo Comm. 3,4



BARBARA GRANT

Senior Class Sec. 4
N.H.S. Optimus 3,4
Choir 3,4
Letterwomen V.P. 4
Letterwomen Sec. 3



MIKE GRAVES



IRIS GREEN

Chorus 4
I.R.L. 4
Firewater 4
Girls' Club Comm. 4



CAROL GREEN

Ski Club 2,3,4
Firewater 4
Programs Co-Chmn. 3,4



DAVE GREENBERGER

Varsity Club 3,4
Football 2,3,4
Wrestling 3,4
Boys' Club Rep. 3,4
Ski Club 2



LYNN GRIBBLE

G.A.A. 2

DORENE GRIFFITH

Chorus 2
Girls' Club Rep. 3
I.R.L. 3,4
F.T.A. 3,4
Firewater 4

BERTA GRUBBS

Choir 3,4
G.A.A. 2,3,4
Tolo Comm. 4
Banquet Dec. Comm. 4
Chorus 2

CAROL GUTH

I.R.L. 4
Tolo Comm. 4
Firewater 4
A.S.B. Comm. 4

KAREN GUTH

I.R.L. 4
Tolo Comm. 4
A.S.B. Comm. 4
Firewater 4

BILL HAIGH

MAGGIE HAINES

N.H.S. Optimus 3,4
Girls' Club Rep. 3
G.A.A. 2,3,4
Ski Club 2,3,4
A.S.B. Comm. 3

WINNIE HALE

Choir 3
Girls' Club Rep. 4
F.H.A. 2

BARB HALL

Girls' Club Rep. 4
Hospitality Comm. 4





SUZANNE HALL
A.S.B. Rep. 3
Tolo Comm. 3



JOAN HAMACK
A.S.B. Treas. 3,4
N.H.S. Optimus 3,4
MESIKA 4
Girls' Club Rep. 3
Tolo Comm. Chmn. 4



JACQUE HAMBLY
N.H.S. Optimus 3,4
MESIKA Art Ed. 3
Girls' Club Rep. 3
Ski Club 3,4
Firewater 4



LEIF HANDEGARD
CHIEFTAIN 4

SHEILA HANSEN

PAM HARDER
A.S.B. Sec. 3,4
Choir 4
Ski Club 4
Senior Board 4
Leadership Conf. 4



BARBARA HARRIS
G.A.A. 2,3
Firewater 4
Tolo Comm. 4
Call. Room Comm. 4



BILL HARRIS
Varsity Club 3,4
Basketball 3,4

RON HAROLDSON
Baseball 2,3,4
Varsity Club 4
A.S.B. Comm. 3
A.S.B. Rep. 3



JERRY HART
Band 2,3,4
Orchestra 2,3,4
Stage Band 2,3,4
Wrestling 2
Chorus 4

DON HARTZELL
Varsity Club 3,4
Wrestling 3,4
Boys' Club Rep. 4



GREG HARVEY
Varsity Club 3,4
Football 3
CHIEFTAIN 3,4
Boys' Club Rep. 3
A.S.B. Rep. 4

CINDY HASKINS
Trans. from New Mexico
Girls' Club Rep. 4
I.R.L. 3
Tolo Co-Chmn. 4
F.H.A. 2

JERRY HAUSE
A.S.B. V.P. 3
Soph. V.P. 2
A.S.B. Rep. 2,3
Varsity Club 3,4
Boys' Club Rep. 4

STAN HAUTER
Trans. from Edmonds
Football 2
Track 2,3,4
MESIKA 4

MEREDITH HAVENS
Girls' Club Rep. 2

GARY HEBERT





JEFF HEGLAND

MIKE HEKKANEN
 Varsity Club 3,4
 Wrestling 2,3,4
 Track 2,3,4
 Football 3
 Boys' Club Rep. 3,4

AL HENDERSON
 A. V. Assistant 3,4
 Wrestling 2,3,4
 Cross Country 3

BOB HENDERSON

GEORGE HICKEY
 Debate 3,4
 Key Club 3,4
 Wrestling 2
 Boys' Club Rep. 3

DIANA HICKEY
 Girls' Club Rep. 2
 Chorus 2,3
 G.A.A. 2

KAREN HICKMAN
 Choir 2,3,4
 Impressions 3,4
 Choir Council 3
 N.H.S. Optimus 3,4
 F.T.A. 3,4

KATHY HILL
 Choir 2,3,4
 Impressions 3,4
 Choir Council 3
 I.R.L. 2,4
 G.A.A. 2,3,4

DAVE HOLLCRAFT
 Choir 3,4
 Impressions 3,4
 Boys' Club Rep. 3
 Football 2,3
 Baseball 2,3

JERRIE LYNN HOLMGREN

KATHY HOLZHAUSER
 N.H.S. Optimus 3,4
 Choir 3
 G.A.A. 2,3,4
 Tennis 3
 Firewater

DICK HORCH
 Basketball 2,3,4
 Baseball 2,3,4
 Varsity Club 3,4
 Student Standards Comm. 4
 A.S.B. Rep. 3,4

RICH HOTES
 Boys' Club Rep. 3
 Senior Board
 Firewater 4
 Key Club 3,4
 Intramurals 2,3,4

ANN HOVDE
 Firewater 4

TERRY HOVE
 Cross Country 3
 Wrestling 3,4





MARILYN HUNRATH
 Drama Club 2
 G.A.A. 2
 Firewater 4
 Chorus 4



ANDY HUSAK
 Impressions 3,4
 Choir 3,4
 Chorus 2
 A.S.B. Rep. 3



LINDA HUSTON
 Impressions 3,4
 Choir 3,4
 Chorus 2
 A.S.B. Rep. 3



RITA INNES
 Band 2,3
 Pep Club 3
 Drama Club 3
 Tolo Comm. 3



DAVE IRBY
 A.S.B. Rep. 3,4



JERRY JANACEK
 Varsity Club Sec. 4
 Football 3,4
 Tennis 3
 A.S.B. Rep. 2,3
 Boys' Club Rep. 3

KATHY JENKINS
 Girls' Club V.P. 4
 Tolo Comm. Chmn. 3
 Girls' Club Rep. 3
 Letterwoman 3,4
 A.S.B. Rep. 2

JO JENNINGS
 N.H.S. Optimus 3,4
 A.S.B. Rep. 4
 Girls' Club Rep. 2,3
 MESIKA 4
 Senior Board 4

SUE JESMER
 Trans. from Blanchet
 Firewater 4
 Girls' Club Comm. 4
 "Highways" 2

CHERYL JETT
 Ski Club 4
 Tolo Comm. 4
 A.S.B. Comm. 4
 French Club 3

ANN JOHANSEN
 A.S.B. Rep. 3,4
 N.H.S. Optimus 3,4
 Girls' Club Rep. 3,4
 CHIEFTAIN Assoc. Ed. 4
 Drama Club 3

LLOYD JOHNSON

LORETTA JOHNSON
 Firewater 4
 Program Comm. 4

LOUISE JOHNSON
 I.R.L. 3,4
 F.T.A. 4
 Drama Club 4
 D.E.C.A. 4
 Choir 4

RICK JOHNSON
 Firewater 4
 Track 3,4

JEFF JOHNSTON
 Football 2,3,4
 A.S.B. V.P. 4
 Wrestling 3,4
 Student Standards Chmn. 4
 Varsity Club Sec.

CHARLOTTE JONES
 Transfer from Bathell
 Firewater 4
 Girls' Club Program Chmn.

SHERIE JONES
 Letterwomen, Pres. 3
 Tolo Chairman 3,4
 A.S.B. Rep. 3
 Senior Rep. to A.S.B. 4



**SALLY JUNGERS**

ANITA KAIN
 N.H.S. Optimus 3,4
 U. of W. Seminar 4
 Girls' Club Toke Chm. 4
 Girls' Club Toke Gen. Chm. 3



CHERYL KEFGEN
 N.H.S. Optimus 3,4
 Orchestra 2,3,4
 Cascade Symphony Orch. 2,3,4
 All-State Orchestra 3

KEN KEHOE
 Varsity Club 3,4
 Football Trainer 3,4
 Basketball Trainer 2,3,4
 Chorus 3



THAYRE KERTZ
 Service Club 3,4
 F.T.A. 3,4
 A.S.B. By-Laws Comm. 4
 Firewater 4

CAROL KIENEKER
 F.T.A. 3,4
 I.R.L. 3,4
 Hospitality Comm. 3,4
 Firewater 4



GAYLE KINGSLEY
 Ski Club 2,3,4
 Letterwoman 3,4
 G.A.A. 2,3,4

JUDY KLEBAUM
 Cheerleader 3,4
 Chorus 4
 I.R.L. 4
 Handbook Comm. 4
 Firewater 4



ARLENE KORHONEN
 Election Comm. 4

KAREN KRAATZ
 N.H.S. Optimus 3,4
 CHIEFTAIN Copy Ed. 3,4
 Choir 4
 Band 2,3,4
 I.R.L. 3
 S-T 4



GEORGE KRIZAN
 Boys' Club Pres. 3,4
 Varsity Club 3,4
 Football 2,3,4
 Student Sds. Comm. 4
 Student Council Rep. 3,4

DENNIS KURTZ

CLINTON LAMBERT

SUE LARAMA
 N.H.S. Optimus 3,4
 MESKA 3,4
 Quill and Scroll 4
 Letterwoman 4
 Tennis 2,3,4

ROY LARUE
 Boys' Club Rep. 4
 Cross Country Mgr. 4
 Basketball Mgr. 3,4
 Varsity Club 4
 Firewater 4



BILL LAWSON
 Firewater 4
 Junior Class V.P. 3

GREG LEHMAN
 A.S.B. Rep. 3,4
 Varsity Club 4
 Baseball 2,3,4
 Wrestling 2,3,4
 Ski Club Pres. 4

JANICE LEIGHTON
 N.H.S. Optimus 3,4
 Letterwomen V.P. 3
 Girls' Club Rep. 4
 Ski Club 2,3,4
 Tennis 2,3,4





KIM LEIGHTON
N.H.S. Optimus 3,4
MESIKA 4, Bus. Mgr. 3
Quill and Scroll 4
Ski Club 2,3,4
Firewater 4

DON LEVENS

SHARON LITTLE
G.A.A. 2,3,4
Firewater 4



PAT LINEHAN
Boys' Club Rep. 4
Orchestra 2,3,4
Choir 3,4
Ski Club 3,4
Tennis 2,3

BRAD LINDELL

CHARLES LIVINGSTON
Key Club 3,4
Intramurals 4
Stage Crew 4



BEN LINDGREN
JAN LINDSTROM
Songleader 3
Choir 4

JOY LLOYD
G.A.A. 3
Firewater 4

SHELLEY LONG
Girls' Club Pres. 4
Girls' Club V.P. 3
N.H.S. Optimus 3,4
Ski Club 3,4
Firewater 4

JIM LUNDBERG

STEVE LYONS
Band 4
Ski Club 3,4
Boys' Club Rep. 2,3

JIM MacDONALD
Boys' Club Rep. 4

ANNE MACKIE
Songleader 3,4
Choir 3,4
Impressions 3,4
All-State Choir 3
S.C.O.P.E. 3

BONNIE MacPHERSON
N.H.S. Optimus 3,4
Choir 3,4
Impressions 3,4
Girls' Club Rep. 2,3
Firewater 4

SHARON MARSHAL
Chorus 3,4

JAMES MARTHALER
N.H.S. Optimus 3,4
S.C.O.P.E. 3,4
Senior Class V.P. 4
A.S.B. V.P. 3
Football 3,4

DALE MARTIN
N.H.S. Optimus 3,4
Boys' Club Rep. 4
A.S.B. Rep. 3





SHARON MARTIN
Scrapbook Comm. 4
Hospitality Comm. 4
Elections Comm. 3,4



LORENA MATTISON
Cheerleader 3
N.H.S. Optimus 3,4
Girls' Club Rep. 2
Ski Club 2,3,4



RICK McCONNELL



TILOURA McCORMICK
Girls' Club Sec. 4
A.S.B. Rep. 4
Ski Club 4
Firewater 4



DEAN McDONALD
Cross Country 3
Band 2,3,4
Varsity Club 4
Baseball 2,3,4
Firewater 4



PAT McFARLAND
Choir 3,4
Ski Club 3,4
Firewater 4
Tolo Comm. 4
Drama 3



SUSAN McFARLAND
Chorus 4
I.R.L. 3,4
Ski Club 2,3,4
Tolo Comm. 3
Firewater 4



GEORGE McLOUTH
Boys' Club Rep. 2,4
A.S.B. Rep. 2
MESIKA 4



JIM McKENZIE

ERNIE McKINNEY
Stage Crew 4
Wrestling 2

BOB McLEOD



ROSECLARE MENALO
Choir 2,3,4
Impressions 3,4
S.C.O.P.E. 3,4
A.S.B. Rep. 4
Students Stds. Comm. 4

LAURINE MILLER
G.A.A. 2
F.T.A. 3,4
Girls' Club Rep. 4



MARK MILLER
Chorus 2
Choir 3
MESIKA 3,4
Service Club 2,3

MARLA MILLER
Drill Team 3,4
F.T.A. 3,4
N.H.S. Optimus 3,4
Firewater 4
CHIEFTAIN 3,4



RICK MILLER

SUSIE MILLER
Girls' Club Rep. 2,3,4
Girls' Club Treas. 3
MESIKA 4
Firewater 4
I.R.L. 4





JOHN MILLS
N.H.S. Optimus 4
Key Club 3,4
Drama Club Pres. 3
School Play 3
Radio Club 4



BYRON MOFFETT
Varsity Club 2,3,4
Wrestling 2,3,4
Firewater 4



DEAN MONTGOMERY
Bond 2,3,4
A.S.B. Rep. 4
D.E.C.A. 4



PAT MORSE
Choir 3,4
I.R.L. 3
Tolo Comm. 2,4
Firewater 4
Ski Club 2

MARK MUELLER
A.S.B. Pres. 4
N.H.S. Optimus Pres. 3,4
Boys' Club V.P. 3
Basketball 2,3,4
Leadership Conf. 4

PAUL NASH

TOD NEUENSCHWANDER
Football 2,3
Radio Club 4

TRUDY NICKOLSON
Chorus 2,3,4
I.R.L. 4
Tolo Comm. 2,4
Firewater 4
Ski Club 4

BOB NITSCHKE
Football 2,3,4
Basketball 2,3,4
Tennis 2,3
Varsity Club 3,4
A.S.B. Rep. 2,4

BRUCE NIXON
Ski Club 2,3
Key Club 3

BOB OGREN
Chorus 4
M.U.T.T. 3,4
Stage Crew 3
Track Manager 3

IONE OLSON
Chorus 3
G.A.A. 2,3,4
Tolo Comm. 4
Girls' Club Rep. 2



ART OPPERMAN
Chess Club 2

LARRY OVERCASH
Boys' Club Rep. 2
Stage Crew 2,3

LARRY PAGEAU
Trans. from Terrace
A.S.B. Rep. 3
Choir 3,4
Ski Club 4
Track 2

DICK PARKS

JAN PATRONEK
A.S.B. Rep. 2,3
Boys' Club Rep. 4
Ski Club 2,3
Lounge Comm. Chmt. 3,4





PAT PAULSON

Chorus 3
I.R.L. 3,4
Drama Club 3
Tolo Comm. 2,3
MESIKA 3

BILL PITMAN

Wrestling 2
Boys' Club Rep. 2,3

STEVE PRICE

Football 2,3,4
Boys' Club Rep. 2,3,4
Varsity Club 3,4
Firewater 4

STAN PERKINSON

LYNN POITRAS

CHEFTAIN Ed. 4
I.R.L. Pres. 3
Ski Club 2,3
Tolo Comm. 4
Quill & Scroll 4

JIM PRINCE

Trans. from Calif.
Football 4
Baseball 4
Boys' Club Rep. 4
Varsity Club 4

GLORIA PERRY

I.R.L. 4
Firewater 4
Tolo Comm. 4

MARK PORTER

Track 2,3,4
Cross Country 3,4
Varsity Club 4
N.H.S. Optimus 3,4

LINDA RAETHKE

G.A.A. 3,4

KATHY PERRY

Trans. from West
Valley Yakima 4
Debate 4

CATHI POWER

Girls' Club Rep. 3
Drama Club 3,4
Tolo Comm. 3,4
A.S.B. Rep. 3
Hosp. Comm. 3

GEORGE REID

A.S.B. Rep. 3
Boys' Club Rep. 4
I.R.L. 4
Track 2,3,4
Varsity Club 3,4

SHERRY PIPKIN

CHEFTAIN Editor 3
Advertising Editor 4
F.T.A. Pres. 3,4
Girls' Club Rep. 4
Tolo Comm. Co-Chmn.

LYNN PRICE

Ski Club 3,4
I.R.L. 3,4
CHEFTAIN 3,4
Girls' Club Pub. Chmn. 4
G.A.A. 2

TERE RENTKO

Chorus 4
D.E.C.A. 4





KAREN RICHARDS
A.S.B. Rep. 3
I.R.L. 4
G.A.A. 3,4
F.T.A. 4



SANDY RIMPLE
Girls' Club Rep. 4
Tolo Comm. 3,4
G. C. Fund Raising 3,4
Lounge Comm. 4
Firewater 4



SCOTT ROBERTS
Trans. from
Edmonds 4



PAUL ROBERTSON
Cross Country 2,3,4
Track 2,3,4
Boys' Club Rep. 3,4
Varsity Club 2,3,4
Firewater 4



LINDA ROBINSON
Band 2,3,4
Chorus 4
Orchestra 2
G.A.A. 2,4
Tennis 3,4



TONI ROCCO
N.H.S. Optimus 3,4
Senior Board 4
MESIKA 3,4
Letterwomen 4
Quill and Scroll

JAN ROGERSON
Hosp. Comm. 4

MARY ROMANO
A.S.B. Rep. 3
Firewater 4
I.R.L. 3
CHIEFTAIN 3,4
N.H.S. Optimus 3,4

KAREN ROSS
Choir 4
Impressions 3,4
Lounge Comm. 3,4
Girls' Club Rep. 2
Tolo Comm. 2,3,4

KARLENE ROSS
Girls' Club Rep. 3,4
Chorus 3,4
A.S.B. Rep. 3
Tolo Comm. 3,4
G.A.A. 2

FERN ROSTAD
MESIKA Copy Ed. 3,4
Quill and Scroll 4
I.R.L. Sec. 3
Girls' Club Rep. 4
Ski Club 3,4

MIKE ROWE
Ski Club 3,4
Boys' Club Rep. 3
Wrestling 2,3,4
Track 2,3,4
Cross Country 2,3,4

GORDON RUDOLPH
Boys' Club Rep. 3
A.S.B. Rep. 4

PEGGY RUPP
Girls' Club Rep. 2,3,4
F.T.A. 3,4
Ski Club 3,4
Drama Club 2,3
CHIEFTAIN 3,4

JOANNE SALAMONSEN
Drill Team 3,4
F.T.A. 3,4
Pop Club 3
Firewater 4
N.H.S. Optimus 3,4

JOAN SAMUELSON
Chorus 3
D.E.C.A.





JOEL SARVER
Lounge Comm. 4
Intramurals 4
Firewater 4
CHIEFTAIN 4

ORIN SATEREN



MARGARET SCALES
F.T.A. Secretary 3,4
CHIEFTAIN 3, Feat. Ed. 4
Hospitality Co-Chris. 4
Firewater 4
I.R.L. 3,4

GAIL SCARR
Exchange Student
from Tasmania
CHIEFTAIN 4
I.R.L. 4
Firewater Sec. 4



STEVE SCHROEDER
Senior Class Pres. 4
Varsity Club 4
Wrestling 2,3,4
N.H.S. Optimus 3,4
Ski Club 4; Pres. 3

MIKE SCOTT
Varsity Club V.P. 4
Football 3,4
Wrestling 2,3
Boys' Club Rep. 3
Impressions 4



JIM SEARS

GARY SHAFER
N.H.S. Optimus 3,4
Varsity Club 3, Treas. 4
Wrestling 2,3,4
Track 2,3,4
Cross Country 2,3



JEANNE SHIVELY
Ski Club 4
Girls' Club Rep. 3

MADOLON SIEDECKI
A.S.B. Rep. 4
Tolo Comm. 3
Chorus 3
Lounge Comm. 4
G.A.A. 2,3



JERRY SILVERS
Chorus 3,4
Usher 3,4

PETE SINRUD
Chess Club 2,4
Firewater 4
MESIKA 3

KAREN SISOM
Choir 4
Hospitality Comm. 3,4
Tolo Dec. Comm. 2,4
I.R.L. 4
Girls' Club Rep. 2,3

SALLY SKEI
DECA 4
G.A.A. 2,3,4
I.R.L. 3,4
G. C. Program Comm. 4
Firewater 4

JOAN SKIFTENES



MARGI SLABAUGH
N.H.S. Optimus 3,4
CHIEFTAIN Feat. Ed. 3
Asst. Ed. 4
F.T.A. 2,3,4
Letterwoman 3,4

JOHN SLATTUM
Choir 4
Impressions 4
All-State Band & Choir 3
Drum Major 2,4
Wrestling 4

KEN SLATTUM





MIKE SLOY

LARRY SOLIE
MESIKA 3, Photo Ed. 4
Boys' Club Rep. 3
Service Club 3,4



LARRY SOWELL
Chess Club Pres. 4
F.T.A. 3
Boys' Club Rep. 2,3
Football 3
Track 3

HEIDI SPAETH
A.S.B. Rep. 2,3,4
Student Stds. Comm. 3
S.C.O.P.E. 3
Letterwoman 2,3, Sec. 4
Firewater 4



SANDY SPARKS
Girls' Club Rep. Alt. 4
Letterwoman 3,4
G.A.A. 2,3,4
Tala Dec. Comm. 4
I.R.L. 4

JACKIE STAGG
Trans. from Calif. 3



JACK STANFORD

JERRY STEELE
Band 3,4
Wrestling 3,4

SHARON STILL
Girls' Club Pres. 3
G.A.A. 2,3
Ski Club 3,4
Firewater 4

TOM SWANSON
Tennis 3,4
Varsity Club 4
Senior Board 4
Boys' Club Rep. 3

ANN SYMONDS
Senior Board 4
Chorus 3
Ski Club 4
Tala Comm. 4
Firewater 4

JOAN STARK
Drill Team 4
Student Store Co-Mgr. 3
Chorus 3
Girls' Club Rep. 3
A.S.B. Rep. 3

RICK STICKNEY
Cross Country 3,4
Track 3,4
Varsity Club 3,4

ALLAN STOFFEL
Cross Country 3

LINDA SWARTZ
N.H.S. Optimus 3,4
Debate 3,4

RON TACHELL
A.S.B. Pres. 3
Boys' State 3
Ski Club 3,4
Wrestling 2,3,4
Track 2,3,4





JUDY TEEL

BILL THOMPSON

N.H.S. Optimus 3,4
 Varsity Club Pres. 3,4
 Football 2,3,4
 Basketball 2,3
 A.S.B. Rep. 3

ELLEN TROOST

Class Sec-Treas. 2
 Girls' Club Rep. 3
 D.E.C.A. Sec-Treas. 4
 D.E.C.A. Conv. Rep. 4

SUE TERRY

CHRIS THOMPSON

Senior Board 4
 A.S.B. Rep. 2
 Boys' Club Rep. 2
 Wrestling 2

DAVE TRUAX

Track 3,4
 Cross Country 4

CLIFF THALER

JAN THOMPSON

Girls' Club Rep. 2,3,4
 G.A.A. 2

TOM TUMBLIN

Boys' Club Rep. 2,3,4
 A.S.B. Rep. 3
 Football 2,3,4
 Basketball 2,3,4
 Varsity Club 3,4

MARK THOMAS

MIKE THORNBURGH

IRENE VERNON

PAT THOMAS

IDA TINKHAM

ESSIE WAGNER

Letterwoman 3,4
 G.A.A. 2,3,4
 Ski Club 3,4
 Girls' Club Rep. 3



JACK WARD
Wrestling 2,3,4
Football 2,3
Ski Club 2,3,4
Boys' Club Rep. 2,3
Firewater 4

CHERI WALKER
I.R.E. 4
G.A.A. 2,3,4
Tolo Comm. 3,4
Firewater 4



CHERI WARNER
A.S.B. Rep. 3,4
Tolo Comm. 4
Hospitality Comm. 4
Firewater 4

BILL WHITING
Football 2,3,4
Wrestling 2,3,4
Varsity Club 3,4
A.S.B. Rep. 4
Track 2,3,4



CHERI WHITTLESEY
Impressions 3,4
Choir 3,4
Firewater 4

CHUCK WICKERSHAM



BARB WILKEY
N.H.S. Optimus Treas. 3,4
Choir 4, Treas. 3
Impressions 3,4
Tolo Comm. 3,4
Firewater 4

CHERYL WILLIAMS

TOM WILLIAMS

TIM WITMAN

BONNIE WOODLEY
Firewater 4
Tolo Comm. 4
Service Club 4

CHARLETTE WILL
Saph. Class V.P. 2
Cheerleaders 3
Girls' State Rep. 3
Choir 3,4
Firewater 4

JANET WILLIAMS
Ski Club 2,3,4
Drama Club 3
G.A.A. 2
Tolo 2
Firewater 4

MARILYN WILSON
Chorus 4
I.R.L. 4
Tolo Comm. 4
A.S.B. Program Comm. 4
Firewater 4

MARLENE WITMER
G.A.A. 4

TOM WOODWARD
Transfer from
Spokane 4





CLAUDIA WYSOCKI

Trans. from Oak Harbor 4
N.H.S. Optimus 4
Drill Team 2,3
German Club 3
Girls' Club Rep. 3

KAREN YOUK

A.S.B. Rep. 3,4
Girls' Club Rep. 2
Chorus 2,3
F.T.A. 3,4
Tolo Comm. Chmn.



BOB YERKAN

Varsity Club 3,4
Football 2,3
Radio Club 4

CLAIRE ZIEGLER

Trans. from Alaska
A.S.B. Rep. 2
Ski Club 2

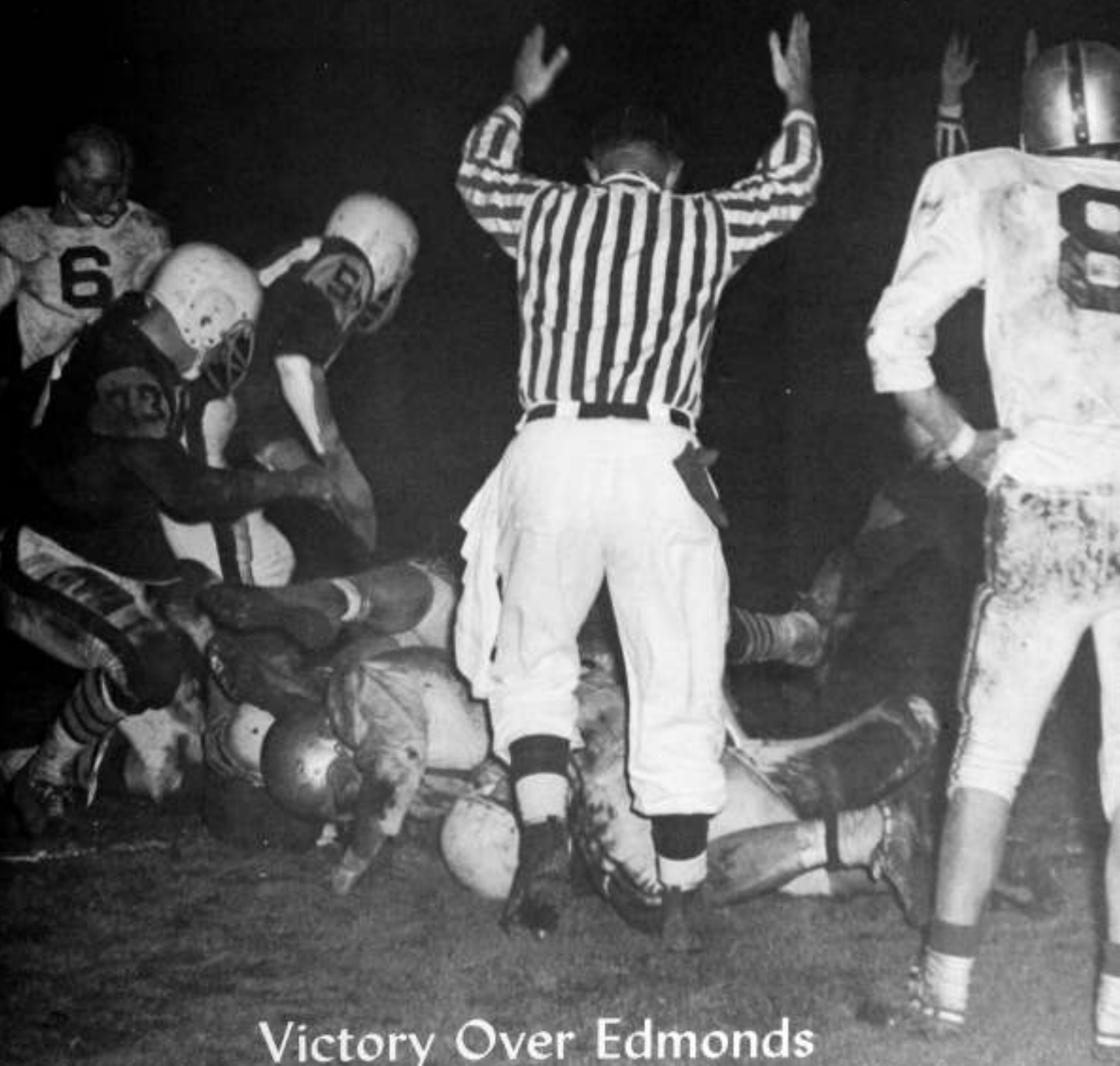


OK Harvey, turn on that irresistible charm.



Make one mistake and I'll ...

FALL



Victory Over Edmonds



Vice-Pres. Jeff Johnston



President Mark Mueller



Treas. Joan Hamock



Sec. Pam Harder

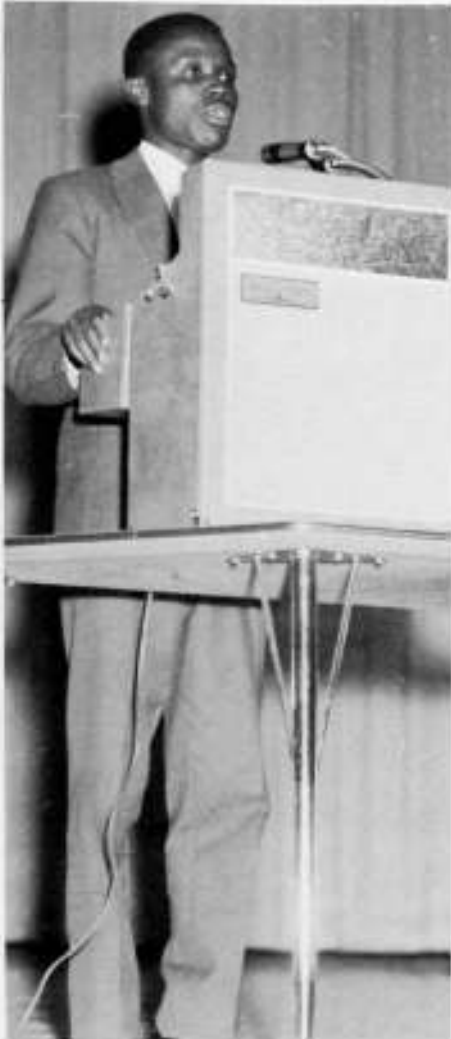


Ass't Treas. Virginia Winn

ASB REPRESENTATIVES

Necessary to any student body that is to function smoothly are the ASB Representatives. Behind the scenes, they are always on the job working together for a more efficient and united Student Body.





One of the distinguished guests who visited Meadowdale during the year to tell the student body about his native land and some of the customs observed there.



An effective organization working out of ASB, the STUDENT STANDARDS COMMITTEE dealt with school problems and established rules of conduct for the student body.



Studying and co-operation are vital parts making up the routines of most of the student body of Meadowdale.

Girls' Club



From left to right: Girls' Club officers: Shelley Long, Pres.; Kathy Jenkins, Vice-Pres.; Tiloura McCormick, Corr. Sec.; Susie Harter, Rec. Sec.; Kathy Duckworth, Treas.

We can be reasonably proud of the effort put forth in creating an active Girls' Club this year. The new Girls' Club office gave them a center of communication where they planned for the many activities that they sponsored. Among these were the successful Tolo, Ye Olde Lamplighter; the canned food drive; and the Mother-Daughter Tea. A bake sale and car wash helped to increase their budget. Squaw Squawk and a Girls' Club creed were among the projects undertaken by this group.



Sue Terry, Gail Scarr, and advisor, Miss Buzzard help paint lamp posts for use at the Tolo.



Boys' Club

School spirit has been an important factor in promoting activities for Boys' Club this year. This spirit was proven by their victory over Girls' Club in the canned Food Drive. Informative assemblies and interesting activities have been the goals of Boys' Club. Its officers and members have proven themselves worthy of achieving these goals.



A Boys' Club volunteer, Paul Beals, helps with the decorations for Tolo.



From left to right: Boys' Club officers: Mike Buchmeier, Sec.-Treas.; George Krizan, Pres.; Jim Coan, Vice-Pres.





Mark Mueller, Pres.
 Sharon Still, Sec.
 Cheryl Kefgen, V.P.
 Barbara Wilkey, Treas.

OPT Meadowdale Chapter Of The

The Optimus Chapter of the National Honor Society, Meadowdale Senior High, held its first initiation this year thereby introducing a tradition to be followed each year. Mr. Rudy Kovacevich is faculty advisor to the group



Marion Armstrong Donn Anderson Jean Barrows Beth Bone Coral Buschman Barbara Ceis



Chris Davis Jim Dawson Jim Gandy John Gatjens Barbara Grant Maggie Haines



Joan Hamock Jocque Hambly Karen Hickman Kathy Holzhauser Jo Jennings Ann Johansen



Louise Johnson Anita Kain Cheryl Kefgen Karen Kraatz Sue Larama Janice Leighton

MUS

National Honor Society



Kim Leighton



Shelly Long



Bonnie MacPherson



James Marthaler



Dale Martin



Lorena Mattison



Marla Miller



John Mills



Mark Mueller



Lynn Poitras



Mark Porter



Toni Rocco



Mary Romana



Joanne Salamonsen



Steve Schroeder



Gary Shafer



Margi Slabaugh



Sharon Still



Linda Swartz



Barbara Wilkey

One Year Members

Lucille Alkire
 Bill Andrews
 Linda Bartlett
 Maureen Brewer
 Florence Bryan
 Roger Clement
 Lorena Dunlap
 Kari Esterberg
 Jiggs Haines
 Susie Harter
 Scott Haskins
 John Hastings
 Christine Hawley

Sherry Groves
 Cheryl Jennings
 Nancy Johansen
 Pam Joramo
 Steve Koepf
 Maxine Kopanski
 Mary Kruger
 Anne Lager
 Cindy Lewin
 Sue McAdams
 Jim McHugh
 Sue McKinley
 Lynn Miller

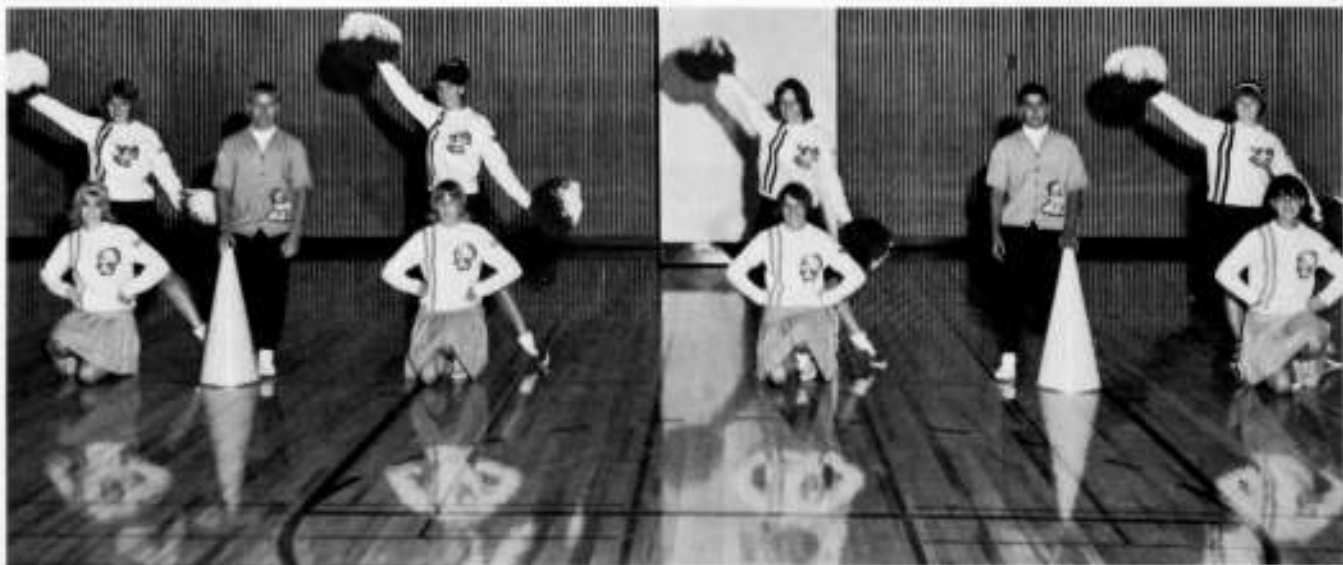
Linda Misiuda
 Mike Monahan
 Marilee Nerod
 Christine Nickolson
 Carol Nafziger
 Peter Rasmussen
 Greg Rice
 Patricia Salamonsen
 Sandy Schnell
 Marlene Schurr
 Laura Till
 Dale Width
 Elizabeth Wright



Bill Thompson



Claudia Wysomierski



Sherry Groves



Billie Alguard



Sue Knouse



The cheer, song, and yell leaders have worked hard through the summer months and after school to present entertaining pep assemblies and to promote school spirit.



Song Queen, Anne Mackie

Football '64



Front row (left to right): Mike Scott, Dave Greenberger, Steve Price, Gary Fox, Bill Whiting, George Krizan, Dennis Brandt, Al Gagnon, Jerry Janacek, Jim Coon. **Middle row (left to right):** Coach Garner, Jan Wright, Ray Ewing, Bob Nitschke, Chuck Austin, Tom Tumblin, Jeff Johnston, Bill

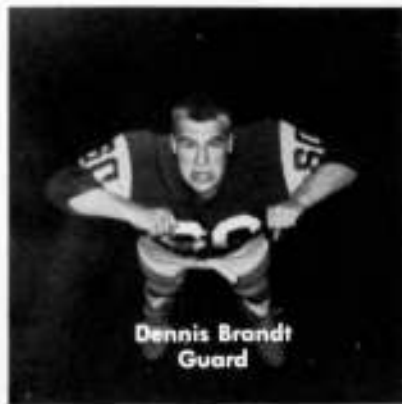
Thompson, Jim Prince, Marty Marthaler, Bob Gogert, Coach Bates. **Rear row (left to right):** Grant Simpson, Ray Payne, Ken Smirz, Greg Olson, Cary Cox, Bob Beriault, Gordon Jesmer, Roger Rindy, Ray Forsythe, Jim McHugh, Greg Hobbs, Paul Byers, Ken Kehoe.

The Chiefs '64-'65 football season was highlighted by outstanding individual performances in addition to a unified team effort. The season's opener with Wenatchee, Meadowdale's first Western Conference game, ended in victory amid the joyous screams of Meadowdale's fans. Meadowdale went on to suffer a few defeats; but under the leadership of Coach John Garner, the Chiefs claimed the victory of victories: the crushing defeat of Edmonds High. With this win, Meadowdale captured the District title and took six places on the District All-Star team. The Chiefs have distinguished themselves as a team of character and skill and are a source of pride for all students of M.H.S.

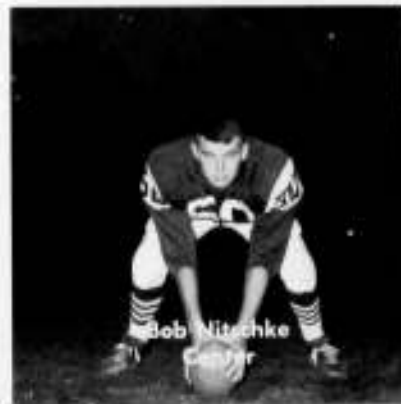




Chuck Austin
Tackle



Dennis Brandt
Guard



Bob Nitschke
Center



Jim Prince
End



Steve Price
Quarterback



Ray Ewing
Fullback



Tom Jumbly
End



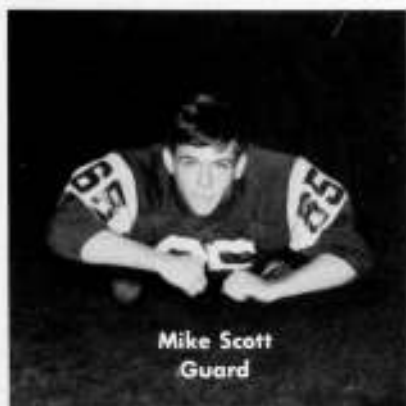
Marty Marthaler
End

SCORES

	M
Wenatchee	19-27
Everett	26- 0
North Kitsap	0-32
Blanchet	40- 6
Vancouver	0- 6
Bellingham	0-18
Cascade	27-14
Snohomish	27-14
Seattle Prep.	20- 6
Edmonds	0-13

STANDINGS

Blanchet	6-0
Seattle Prep.	5-1
Everett	3-3
MEADOWDALE	2-4
Wenatchee	2-4
Bellingham	2-4
Cascade	1-5



Mike Scott
Guard



Jeff Johnston
Tackle



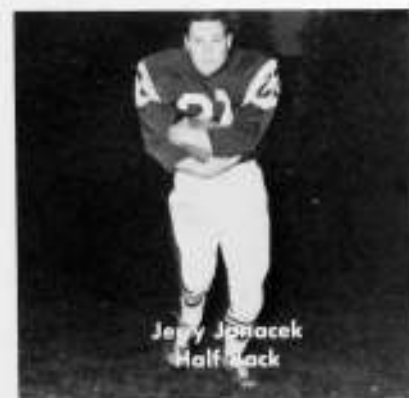
Jim Cean
End



George Gizon
Half Back



Steve Gaffoon
Half Back



Jerry Janacek
Half Back



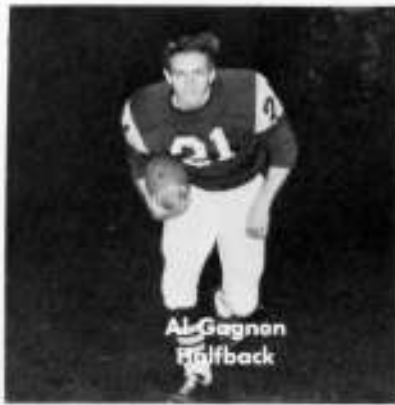
Bill Whiting
Center



Bill Thompson
Half Back



Gary Fox
Fullback



Al Gagnon
Halfback



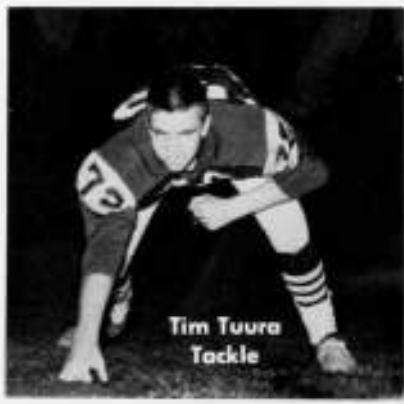
Jon Wright
End



Bob Gogert
Guard



Tim Tuura
Tackle



Mike Buchmeier
Guard



Dan Osborne
End



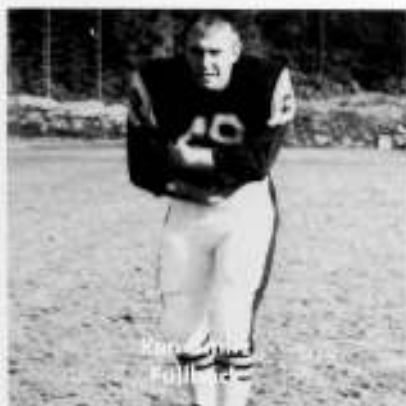
Ray Forsythe
Guard



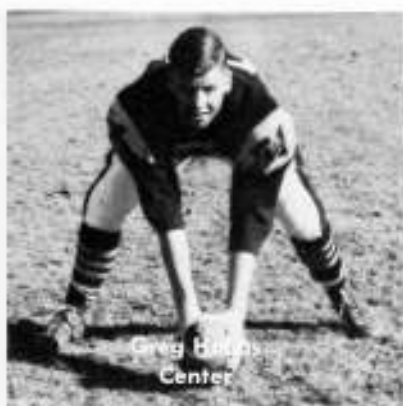
Roger Rindy
Tackle



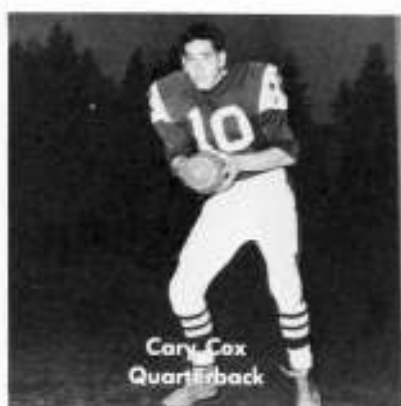
Rob Perriault
Fullback



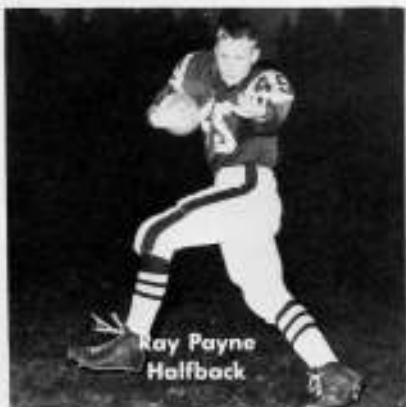
Ray Payne
Fullback



Greg Bishop
Center



Cary Cox
Quarterback



Ray Payne
Halfback



Greg Olson
End



Gordon Jesmer
Guard



Jim McHugh
Halfback

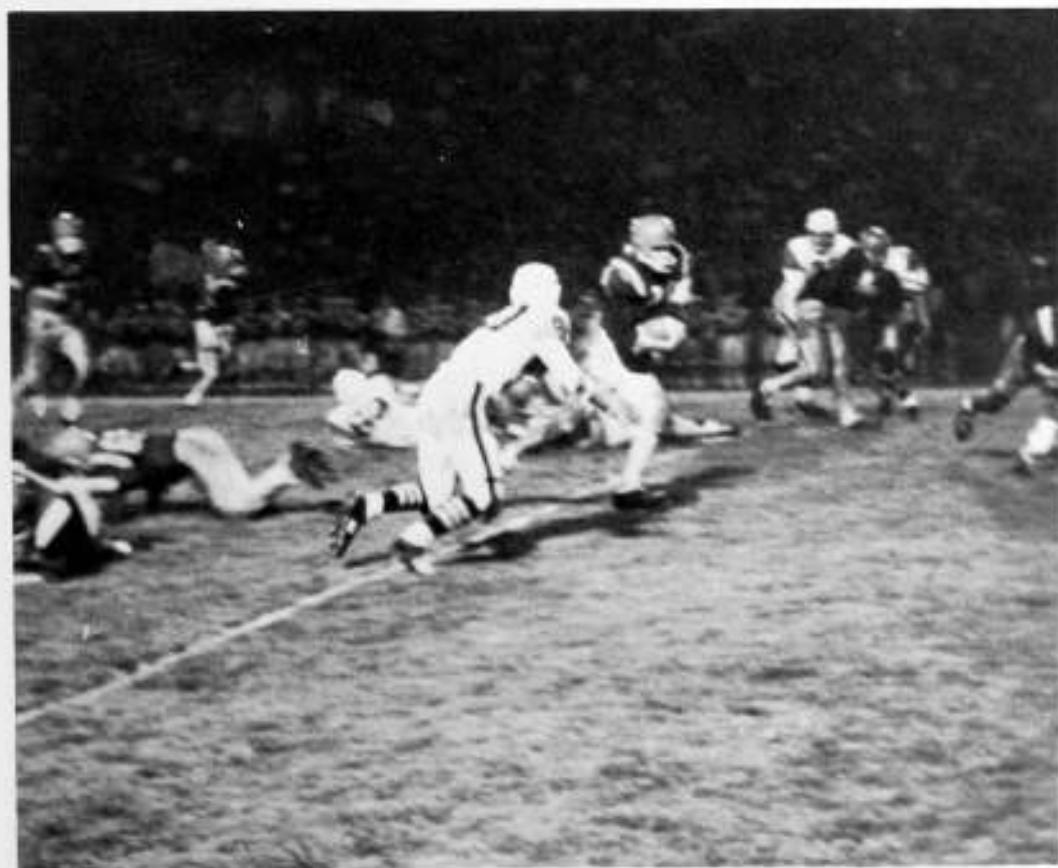


Bow Down To Our





Mighty Team



REPEL THEM,
REPEL THEM,
MAKE THEM RELINQUISH
THE BALL!

Soph Football



Front row (left to right): LaBelle, Church, Olson, Gibbons, Stebing, Clem, Walker, DeLong, Hayworth, Tisdell. **Standing:** Perry, Campbell, Anderson, Yuill, Steinmetzer, Christensen, Farley, Girfen, Taylor, Anabel, Rolston, Courier, Flynn, Bakko, La Fontaine, Long.





GO CHIEFS



Western Co On The



Above are the seven who went to the state meet.



At right are Coach Eason, the varsity Cross Country team, and managers.



Conference Champions Move

Meadowdale's Cross Country team just couldn't stop collecting victory after victory as the season progressed. Their speed and endurance paid off when they finished first in the Western Conference and fifth in the state. Their other accomplishments include two second places, one in District 15 and one in the Northwest District. Coach Pat Eason attributed these victories to no **one** outstanding man but rather to five men who worked together as a team.



Varsity Club



VARSITY CLUB OFFICERS, from left to right: Jerry Janecek, Sec.; Mike Scott, Sgt. at Arms; Gary Shafer, Treas.; Bill Thompson, Pres.



The Varsity Club has been one of the most active organizations of M.H.S. this past year.

The club sold M.H.S. license plates to raise money with which to buy pennants for the championship teams. They also had an Ugly Man Contest to collect funds for the club treasury.

Throughout the year, the Varsity Club members took upon themselves the responsibility of hall patrol duty. The object of the hall patrols is to clean up the school grounds and lunchroom and to maintain order in the hallways. They also put up bleachers and chairs for assemblies.

Through the efforts of the Varsity Club, M.H.S. students have enjoyed activities and privileges that would not have otherwise been possible.



Letter Women



LETTERWOMEN OFFICERS, from left to right: Kathy Duckworth, Point Keeper; Heidi Spaeth, Sec. Treas.; Barb Grant, V.P.; Carol Brooks, Pres.

NEOPHYTES



CHILI FEED



Letterwomen is an organization that is constantly on the move. These active girls have been an inspiration to other girls who wish to take part in athletic and social activities.

The Letterwomen sponsored the Fiesta Chili Feed and the dance on the night of the Everett-Meadowdale basketball game. A neophyte initiation which required potential Letterwomen to wear bizarre costumes added interest and humor to routine school dress.

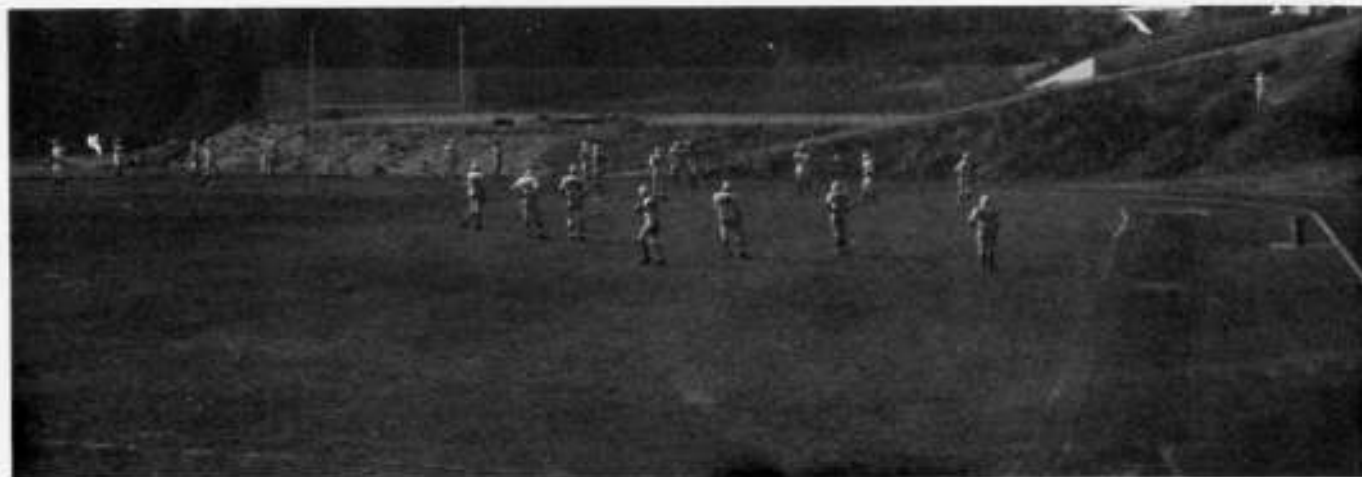


Through the sincere interest and efforts of the fathers of Meadowdale students, our school has acquired numerous advantages not usually enjoyed by a new school.

The student body is truly grateful for the hard work and many hours the Dads' Club has contributed. The results of their endeavors included an excellent grassed football field and a valuable biology pond making possible advanced nature study for students. A roster train to Wenatchee, with the Chiefs winning 27-19 in our first Western Conference game, was the first project to be instigated by the Dads' Club during the '64-'65 school year and was deemed successful by all involved.

The purpose of the Dads' Club is not to act as a substitute for the P.T.A. but rather to function separately with informal meetings toward bettering Meadowdale Senior High in ways they see fit. Meadowdale is truly moving forward with the much appreciated help of the Dads' Club.

DADS' CLUB





Meadowdale versus Edmonds



Bob Romstead

Bow down to our mighty team
They'll really pour on the steam
Fight onward for victory
A basket is on the way
Fight, fight, fight
Cheer, cheer for our blue and white
They'll really scalp 'em tonight
Fight fellows, fight 'til the end
for M.H.S.



Jerry Walters



Cheer Queen, Marilyn Miller



Eileen Anderson



Judy Klebaum



Patty McCormick

B A S K E T B A L L '64 - '65

Competing in a powerful league and displaying great perseverance, the Chiefs emerged with a season of victories and excitement.

The team consisted of twelve cagers, five being juniors who played throughout the season.

Meadowdale went on to capture our second District championship of the year with decisive victories over Edmonds and Terrace. The determination and sportsmanship displayed by the cagers is a source of pride for all Chiefs.



Coaches Phil Hull and Ed Pepple go over their strategy.

Left to right: Standing are Tim Tuura, (j.); Mark Mueller, (sr.); Dick Horch, (sr.); John Larmore, (j.); Ray Ewing, (sr.); and Pat Echelbarger, (j.). **Kneeling**

are Steve Laffoon, (sr.); Wally Curtis, (sr.); Bob Vollenhals, (j.); John Nickell, (j.); and Jim Caan, (sr.).



V
A
R
S
I
T
Y



Dick Horch



Tim Tuura



Ray Ewing



Pat Echelberger



Bob Vollenhals



John Nickell



Bob Nitschke



Steve Laffoon



John Larmore



MANAGERS, left to right: Terry O'Malley, Paul Byers, Ray LaBelle, Grant Simpson, Ken Kehoe.



Jim Coan



Wally Curtis



Mark Mueller

JUNIOR VARSITY



Left to right: Standing are Coach Ed Pepple, Mike Mannahan, Larry Paulson, Ted Nelson, Bruce Valley, Mike Chostain, and Scott Hoskins. Kneeling are Tony Bokkes, Gary Garland, Al Levine, Greg Anabel, and Don Thompson.



Starting the year as a team made up of all juniors, Meadowdale's second team, lead by Coach Ed Pepple, went through a metamorphosis during the season. A few seniors joined J.V. while five juniors moved up to Varsity by the end of the season. These juniors will be the basis for next year's Varsity team, and the future looks bright for the Chiefs.

SOPHOMORES



Under the leadership of Coach Pat Eason, the Papooses bounced their way through a successful season. The sophomores made the transition necessary to come from junior high to high school, and they placed as many as nine players on the J.V. team in different games. With these players and the juniors coming back next year, Coach Phil Hull should have all the material needed for a successful team.

Left to right: Back row: Coach Pat Eason, Swerk, Murray, Courier, Farley, McLain, Yuill. **Front row:** Mgr. Potter, Stanford, Shrieve, Ross, Mickels, Mgr. Case.



Wrestling



Varsity



Standing: Bill Whiting, Gary Shafer, Chuck Austin, Jeff Johnston, Mike Buchmeier. *Middle row:* Steve DeLong, Mike Hekkanen, Rich Brown, Steve Schroeder. *Sitting:* Bill Taylor, Rick Doty, Byron Moffett, Ron Litweller.



Cook's Chiefs

Standing: Gary Shafer, Roger Rindy, Stan Johnson, Jerry Pate. *Middle row:* Dave Meyer, Dan DeLong, Scott Meyer, Dean Rockne. *Kneeling:* Ed Brookes, Bill Myhre, Dave Zehrung, Lanny Hansen.

J.
V.





Ron Litwiller, 103



Byron Moffet, 112



Rick Doty, 120



Coach Terry Johnson, Captain Bill Whiting, and Head Coach Bruce Cook.

The enthusiastic leadership of head coach Bruce Cook and assistant coach Terry Johnson spirited the Chief's wrestling squad to take third place in sub-district competition. At the season's end, MHS sent eight men to the district meet in which Mike Buchmeir and Bill Taylor placed fourth. Stated Coach Cook, "I couldn't have asked for a harder working bunch of guys. I mean that sincerely."



Mike Hekkanen, 145

Steve DeLong, 154



Bill Whiting, 165



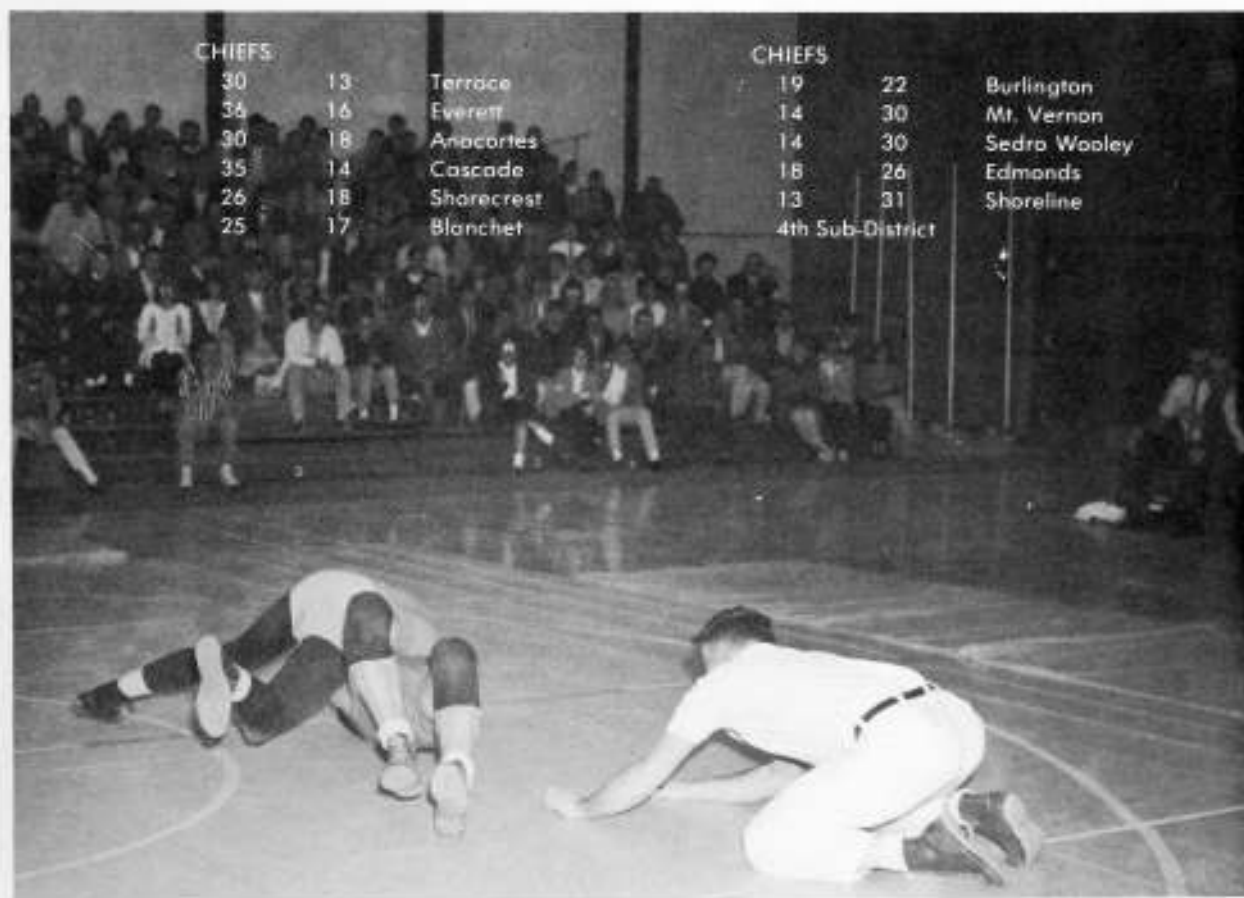
Bill Taylor, 127



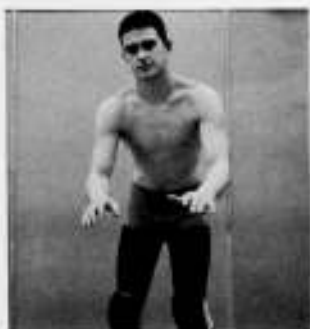
Steve Schroeder, 133



Rich Brown, 138



Chuck Austin, 175



Jeff Johnston, 191

Mike Buchmeier, Hwt.





The Mutts are Meadowdale's own ushers and ticket takers, while concessions is responsible for the selling of refreshments at school activities.

Appreciation goes to the audio-visual people who can be thanked for help throughout the year, and to stage crew for their assistance during assemblies.

Key Club, active during first semester, arranged for the library to be open after school hours.

Another necessary service club, new this year, is DECA. This is a business class, also responsible maintenance of the Student Store.



DECA



Many clubs are formed for activity, prestige, experience, and fun. However, the Service Clubs of Meadowdale are formed for all these reasons and more. The participating students have put forth much time and effort to serve the student body in various ways.



STAGE CREW





Peri Axness
Carol Buschman



Linda Carrick
Greg Harvey



Ann Johansen
Karen Kraatz



Sue Laroma
Kim Leighton



Marla Miller
Sherry Pipkin



Lynn Poltras
Toni Rocco



Mary Romano
Fern Rostad



Margaret Scales
Margi Slabaugh



QUILL & SCROLL is an international society designed to honor outstanding journalistic work. There is an especially large society this year because many students have spent the past two years laying the foundation of our school publications MESIKA and CHIEFTAIN.

The two advisors are Mrs. McCracken and Mrs. Kaluda. Gail Scarr, our foreign exchange student, is an honorary member.





This year in a combined effort the music department presented the annual Mid-Winter and Pops concerts. Under the direction of Mr. Robert Burton, the Impressions, Choir, Chorus, and Concert-Band performed such selections as "The Hallelujah Chorus," "Nearness of You," "Shirley," and tunes by George Gershwin. Also performing was the orchestra directed by Mr. Eric Koker.

As an added highlight to the Pops Concert, the Concert-Band and vocal department combined to present Porgy & Bess. This was the first time in this district such an effort has been undertaken.

CHIEFTAIN

ON THE



Our goal this year was to present school news with maturity and taste.

Mr. Logan Long generously provided the journalism staff with a Polaroid camera which made possible greater flexibility in coverage of news events.

The Chieftain is a bi-monthly publication keeping the Associated Student Body of Meadowdale accurately informed on various events affecting the school.

Among the numerous articles appearing in the Chieftain were Chiefs of the Week chosen as the outstanding athletes of a varsity sport. Also completing the newspaper included editorials voicing the opinions of the editors on various school, state, and national policies and current fads in existence around Meadowdale.



MOVE



Mrs. Koluda,
Advisor



Mesika



Advisor, Mrs. Nancy McCracken; Editor-in-Chief, Peri Axness.

This year's MESIKA is the product of a dedicated staff. Students talented in English, art, and photography have worked together, facing many trials and frustrations to produce a satisfactory yearbook.



Staff Editors: Fern Rastad, Linda Carrick, Bob Pearson, Sue Larama, Peri Axness, Kim Leighton, Roger Clement, Toni Rocco, Carol Buschman.

n Motion

To the students and teachers of Meadowdale, we wish to extend our appreciation for your understanding and cooperation in helping us to prepare the MESIKA 1964-65.





FIREWATER

Firewater, the major organization responsible for school spirit, has played an active role in the development of student participation. Bill Lawson, president and Gail Scarr, secretary, aided by Mr. Pepple and Miss Dyck, have undertaken many activities to boost school spirit. Membership is open to any student interested in supporting the teams and the student body.



DRILL TEAM

The Drill Team has done much to promote school spirit this past year. Throughout the summer and school term they have undertaken car washes, candy and donut sales to finance their uniforms. They also sponsored the Fall Football Festival, one of the major school activities of the year.



Drill Team Officers are Lori Barrett, captain; Diane Anderson, co-captain; and Mrs. Gilson, faculty advisor.



The all-important Meadowdale-Edmonds football game was highlighted by a Pep Week sponsored by Firewater.



SKI CLUB

This year Ski Club was one of the larger and more popular school organizations. Club fund raisers consisted of two donut sales and movies on skiing. Their efforts were rewarded when they were able to sponsor an overnight ski retreat in March. Ski Club officers are Greg Lehman, president; Ron Tachell, vice president; Pam Harder, secretary; and Steve Schroeder, captain of the racing team. Mrs. Knocke is the faculty advisor.



Vocal Department

Contributing as much or more than any other group of students, the Meadowdale High School Vocal Department is to be highly commended for its many fine talents. Responsible for various successful programs throughout the year, these young musicians have time and time again won the applause and admiration of their audiences.

In spite of the fact that the Vocal Department is newly organized, it has undoubtedly set exceptionally high standards for the music groups of coming years. This is attributed to many hours of hard work and also to a fine director, Mr. Burton.



Choir



Choir members are busy people at concert time. This picture is one taken as the Vocal Department prepared for a concert at Lynnwood Junior High.



C
H
O
R
U
S

I
M
P
R
E
S
S
I
O
N
S





B
A
N
D

In Concert . . .



The instrumental organizations, band and orchestra, have contributed much in helping Meadowdale continue to be on the move.

The band, under the direction of Mr. Burton, stimulated school spirit at numerous athletic events by participating in the halftime ceremonies during football season and enthusiastically supporting the basketball team at home games. The band also provided well executed musical scores for its concert audiences.

Also performing in a noteworthy manner was the orchestra, directed by Mr. Kaker. Through active participation in Meadowdale's concerts, the orchestra has emerged a successful group.



ORCHESTRA



Meadowdale's G.A.A. members led by officers Carol Brooks, president; Barbara Grant, vice-president; Heidi Spaeth, secretary-treasurer; and Kathy Duckworth, point keeper.

GAA



Meadowdale girls take an active part in sports, ranging from ping-pang to bowling. Under the leadership of Miss Sharon Weeks and Miss Viola Dyck, the girls work hard to earn points toward their letter.







GAIL SCARR

Adding charm with a smile was Meadowdale's first foreign student, Gail Scarr. Lively, pretty and friendly, Gail was a well-chosen representative of the teen-agers in Tasmania, Australia. With her American "sister," Karen Kraatz, she furthered good will among two countries. She will always be fondly remembered by those who knew her.



Sharing each other's company as well as countries, Karen and Gail were an inseparable twosome. With friend-making smiles and comments they could be seen together in the halls and classrooms. Above — Dr. Kloes, Gail and Karen discuss next year's foreign student. Right — Gail and Karen stop to talk before the locker they shared.





SPRIT

An active participant in all school affairs, Gail was a welcome addition to M.H.S. Whether yelling for victory or sitting in class, she was definitely an asset to school spirit.

Dear M.H.S. Student Body,

What a year this has been! Being Meadowdale's first foreign student has been such a "beaut" experience. Everyone is so much fun, and I will never forget the casual atmosphere and student teacher relationships.

I have learned lots about America. Australians and Americans are very similar, except you have cute accents, unique expressions and interesting yet attractive clothes, such as your girl's sowed off pants with a fly in the front.

I've enjoyed all aspects of Meadowdale, including your many clubs and activities, dances, pep weeks and assemblies. I've especially enjoyed bellowing with you at games.

Thanks to my wonderful American family and to all of you for making this year worthwhile and fun. I hope in turn to have brought to you something of Australia — recognition that it is a progressive country and not simply a land of aborigines, kangaroos and boomerangs.

I reckon you're all "fair dinkum beaut blokes." Thanks for a wonderful year.

GAIL

The Olde

Lamplighter



"You'd hear the patter of his feet as he came toddling down the street . . . His smile would hide a lonely heart, you see . . .

If there were sweethearts in the park . . . He'd pass the lamp and leave it dark, remembering the days that used to be . . .

He made the night a little brighter, wherever he would go . . .
THE OLDE LAMPLIGHTER of long, long ago . . ."



THE OLDE LAMPLIGHTER was the theme of this year's Girls' Club Tola. Amidst snow, Christmas trees, and a holiday spirit, many couples danced to the music of the Checkmates.

International Relations League



Above, IRL officers, left to right: Marilyn Miller, V.P.; Karen Kroatz, Sec.-treas.; and Nancy Johansen, Pres.



Above—Foreign students participating were from such countries as Turkey, Norway, Egypt, Japan, and, of course, Tasmania.

Right—A panel discussion was held at an assembly for Foreign Student Day at which questions were asked about their customs, dating, school, and first impressions.



A reception was held for visiting foreign exchange students in our area. This was the finale to Foreign Student Day, when Meadowdale students had an opportunity to meet and talk with foreign students.



D
R
A
M
A

C
L
A
S
S



Through the production of *Finnian's Rainbow*, Meadowdale's Drama Class displayed its talent by supplying the majority of the leads and minor parts in the play.

The two act, nine scene play demonstrated both the cast's and Mr. Crossett's ability to produce an entertaining musical from a relatively inexperienced cast. "The Rainbow" was started from scratch, and over a three month period an excellent production was created.

Far being in existence for only one year, the Meadowdale Drama Class has proven that the addition into the school curriculum of daily classes in dramatics has great potential.



Debate



Sue McAdams



Kevin Brechner



Carol Nofziger



Jann Washkovich



Bob Samuelson

Appreciation is certainly deserved by Meadowdale's debate team which spent many hours in efforts to gain recognition for their school. Their victories would not have been possible without the guidance of Mr. Lynes King who willingly devoted hours of his time to the debators. This year's debate team has worked hard to prepare for the various contests in which they participated. Many of these contests were state-wide and involved students from Washington's leading high schools. Debate activities include oral interpretation, oratory, impromptu, and extemporaneous speaking.



Skip Hickey



Barb King



Mr. Lynes King



Iris Green

Juniors

Class Of '66

Juniors...

A class of action, accomplishment and endeavor...

The Junior Class began the school year in high spirits as they defeated the Sophomore and Senior classes in October Magazine Fund Drive.

Many Juniors have proven their efforts to be successful in sports, music, debate and academic achievements.

Led by Steve Koeppe, president; Linda Misiuda, vice president; Sue McAdams, secretary; and Anne Lager, treasurer, the Junior Class sponsored several activities and promoted school spirit.



Gail Able
Ralph Aggard
Alton Akers
Tim Alden
Billie Alguard



Bob Aline
Lucille Alkire
Norris Alyesworth
Sue Andahl
Dick Anderson



Eileen Anderson
Tom Anderson
Bill Andrews
Vicki Arnold
Dennis Ashbrook



Dave Aspeness
Stan Aukland
Alica Austin
Gary Axelson
Becky Backus





Joyce Bakbila
Gail Balimes
Marlena Bangerter
Jim Bannister



Leslie Beard
Helen Beckman
Terry Belmont
Jody Bendotti



Doug Berg
Bob Berioult
Robert Berstler
Jim Bilder



Rick Birkenbeul
Jenny Blackford
Kathy Bogart
Kathy Bone



Sandy Boone
Melvin Bowman
Kevin Breckner
Dave Brennis
Maureen Brewer



Sherrie Briggs
Barbara Brown
Dennis Brown
John Brown
Florence Bryan



Mike Buchanan
Mike Buchmeier
Gordon Bundy
Victor Bundy
Jean Bunker





Sharon Burfitt
Russ Burfitt
Walter Burfitt
Chris Burton



Mike Burton
Steve Byam
Paul Byers
Pat Cabot



Marie Cameron
Karen Carlson
Bill Carper
Bill Carter



Frank Carter
Van Caryl
Linda Christensen
Bob Christopher



Lynn Clark
Dave Claudus
Mike Clemens
Roger Clement
Sue Coleman



Jim Conner
Karen Cooper
Gary Cox
Linda Dahl
Robin Dastis



Jack Davidson
Jim Davidson
Ken Davis
Steve Douzenroth
Leland Deltart



Greg Delmarter
 Steve DeLong
 Marsha DeMouth
 Tony DiPangrazio
 Linda Dodge



Rick Doty
 Rich Drawsky
 Trudy Duims
 Lorena Dunlap
 Leslie Dwyer



Pat Echelbarger
 Delores Echols
 Kim Ecklund
 Kathy Eddings
 Pat Eisen



Nancy Elms
 Jean Elvin
 Joan Elvin
 Barbara Emel
 Elisha English



Karl Esterberg
 Colleen Farrel
 Dan Fay
 Sandy Ferchen
 Jean Fernen



Nancy Filbin
 Keith Fletcher
 Ray Forsythe
 Judy Foster
 Judy Foyt



Maureen Fox
 Ron Freer
 Larry Fritz
 Graig Fullerton
 Marion Gagnon

Nancy Garrison
 Toni Gazur
 Sharon Geiger
 Mary German
 Judy Gilbert



Sue Gilbert
 Lenita Gilman
 Gary Goebel
 Wynell Good
 Jim Goodwin



Dennis Gorley
 Rick Goroski
 Patrick Graeber
 Dick Graeler
 Jerry Graham



Barbara Greene
 Byron Greene
 Sherry Groves
 Dick Haigh
 Jiggs Haines



John Hall
 Mary Hammontree
 Cheryl Hansell
 Kathy Hansen
 Walter Hanson



John Hardy
 Bob Harper
 Jay Harris
 Judy Harris
 Susie Harter



Scott Haskins
 John Hassel
 Carol Hastings
 John Hastings
 Dan Haviland





Chris Hawley
Arthur Haynes
Jim Henness
Dick Hickok
Dan Higbee



Kathy Hill
Greg Hobbs
Phil Haglund
Vicki Houver
Steve Hornins



Alice Howde
George Hueth
Dan Huston
Jim Iverson
Peggy Jacobson



Ginger Jay
Cherly Jennings
Judy Jensen
Gordon Jesmer
Nancy Johansen



Judy Johnson



Sam Johnson



Sheryl Johnson





Sue Johnson
Phil Jones
Pam Jorjama
Steve Keller
Jack Kelly



Mary Kerr
Tom Kleinau
Sue Knouse
Mike Koch
Steve Koepp



Laura Konopinski
Maxine Kopanski
Paul Kraus
Kathy Krizan
Sheryl Krizan



Melady Kroener
Mary Kruger
Joy Kulle
Barbara Lane
Ann Lager



Steve Logonde



Dave Langner



John Larmore



Sandi Larne
Pat Lee
Judy Leedy
Lynn Leonard
Cindy Lewin



Bonnie Lewis
Dave Lewis
Phyllis Linehan
Dick Livingston
Vicki Looney



Dotti Lyon
Sue McAdams
Jim McCann
Gladys McClain
Dan McCleau



Patty McCormick
Robert McCart
Sharon McCune
Jim McHugh



Jim McKenzie
Sue McKinley
Mike McMahan
Rexane Magruder



Alan Malmquist
Lois Manley
Ann Marshall
Terri Martel



Richard Martin
Dale Mayou
Craig Merchant
Janet Merchant



Marcia Merklingshaus
 John Michaelis
 Lynn Miller
 Marilyn Miller
 Norma Mills



Linda Misuda
 Pam Mitcham
 Marcha Mitchell
 Mike Monahan
 Rita Moore



Linda Morley
 Craig Morris
 Karen Morris
 Dan Mosser
 Bill Munson



John Murphy
 Dave Myers
 Scott Myers
 Tom Newman



Chris Nicholson
 John Nickell
 Carol Noeziger
 Suzanne Nelson



Linda Norley
 Ken Northfield
 Ken Novak
 Carol Oates



Karen Ogren
 Greg Olson
 Dennis O'Neil
 Dan Osborn





Mark Osborne
 Ray Paine
 Darlene Passey
 Jerry Pate
 Larry Paulson



Bob Pearson
 Carl Pearson
 Linda Pearson
 Judy Pederson
 Janice Perry



Nancy Pilon
 Robin Pittis
 Sandy Pratt
 Farol Pugmire
 Bruce Questad



Nancy Roethke
 Bob Ramstead



Marden Randall
 Rick Rhoades

Greg Rice
 Sharon Richards
 Roger Rindy
 Howard Rasmussen
 Gerry Ritchey



Vicki Rittenhouse
 Marie Robbins
 Wendy Roberts
 Jeanee Robinson
 Dean Rockney



Carol Rodvelt
 Donald Rosebaugh
 Pat Rowe
 Linda Rowley
 Penny Rudolph

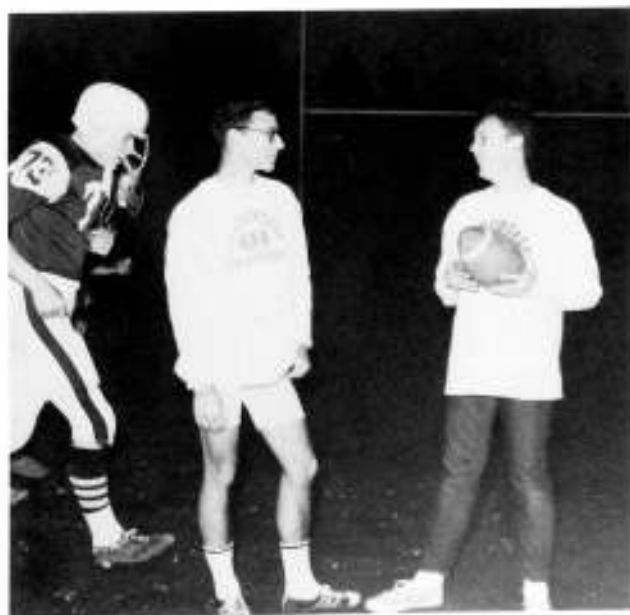


Sharon Rueter
 Diane Rupp
 Pat Salamonsen
 Bob Samuelson
 Marie Scales



Jim Scalf
 Barb Schorer

Ann Schmiedeke
 Sandra Schnell



Marlene Schurr
 Dan Sheetz
 Shirley Sheehan
 Lorinda Shurtz
 Grant Simpson



Pamela Sisson
 Patricia Sjoblom
 Robin Skiffington
 Terry Skiffington
 Steven Skiffenes



Julie Slacum
 Ken Smirz
 Tom Smith
 Barbara Sparks
 Alix Springer



Mike Stanton
 Bonney Stathem
 Stanley Stebing
 Susan Steers
 James Stein



Chuck Steinberger
 Delores Stone
 Jennifer Sue Stenger



Kandy Stratton
 John Suiter
 Steve Swanson





Patty Swearingen
Jan Syltebo
Rick Taht
Janice Talbot
Vern Taylor



Bill Taylor
Sue Terry
William Thomas
Don Thompson
Bill Thrasher



Dennis Tibke
Laura Till
John Turner
Marty Tuttle
Tim Tuura



Linda Tutmark
John Uram
Alma Van De Mark
Richard Vaughn
Sandra Visco



Kathy Vollenhals
Bob Vollenhals
Carolyn Wachsmith



Lynne Wagner
Mike Waite
Bruce Waldroup





Larry Walker
Lyndsay Walker
Richard Walker
Shirley Wall



Constance Wallen
Gene Walters
Gerald Walters
Sharon Walton



Alan Warberg
Laurie Warneking
Sharon Warren
Jann Washkovich



Dianne Weight
Tim Weller
Linda Wheeler
Rick Whetzel



Barbara White
Mike Wickstrom
Dale Width
Virginia Winn



Guy Woods
Linda Woods
Elizabeth Wright
Evelyn Wright

Gertrude Wright
Maureen Wyman
Kathy Yaple
Karen Yeager
Andrew Zastraw
Dave Zehrung

Sophomores

Class Of '67

ADVISORS

Mrs. Simpson
Mr. Crossett
Mr. Johnson
Mr. Neilson

Sophomores . . .

"The source of new inspirations and fresh young ideas."

This has been repeatedly reflected in the enthusiasm of the Sophomore Class at our pep assemblies, the sponsoring of a dance on January 9th, and their victory over the Senior Class in the October Magazine Drive.

Always on the move, the Sophomores—the backbone of the student body—will be there, brightening things up just a little more through their faith in the present and their anticipation of the two years to come.



SOPHOMORE CLASS OFFICERS: left to right, Sam Tisdell, Tony Backes, Betty Wieler, and Steve Potter.

C. Abbott
S. Abbott
M. Aber
P. Adams



E. Acker
S. Akers
D. Allen
J. Allerdice



L. Amundson
G. Anabel
L. Anderson
E. Anderson
K. Anderson
S. Anderson



P. Andrews
R. Andrews
B. Arrowsmith
R. Ayres
T. Backes
D. Baer



C. Bakko
L. Bakko
L. Baker
K. Balsley
N. Barrans
N. Barret





D. Bauer
D. Bauman

L. Bliss
L. Bohn
J. Boling



B. Baumgartner
C. Bayer

H. Bonell
M. Borden
A. Bortin



C. Bendel
G. Bennet

B. Bowman
D. Bowman
J. Bradshaw



L. Bennet
D. Berg

J. Bradshaw
R. Brecht
D. Brecht



B. Berry
W. Bertelsen

P. Brennis
A. Bristol
S. Brodie



D. Brooks
E. Brooks
K. Brooks
F. Brown
G. Brown
R. Brown



S. Brown
J. Brunson
M. Burbank
P. Burke
J. Burling
V. Burns



K. Busch
V. Butt
D. Byam
G. Bylsma
D. Caldart
A. Campbell

J. Campbell
S. Canfield
L. Cantrell
L. Carlson
M. Case
S. Carrick



M. Chaffee
S. Chaffee
M. Chostain
D. Christen
K. Christopher
V. Christiansen



G. Church
L. Churchill
C. Clary
L. Clark
K. Clark
L. Clark



D. Coker
D. Cogswell
J. Comet

D. Daneman
B. Dart



B. Conners
C. Copley
J. Cooke

G. Dart
R. Dauzenrath



D. Corier
B. Craig
P. Cramer

L. Davies
B. Davis



M. Cramer
L. Crary
L. Cruz

D. Davis
P. Davis



M. Curry
B. Cyr
B. Damschem

G. DeBardi
M. DeBruler





D. DeLong
D. DeLong
J. Denby
D. Dieter
R. Dodge
P. Downey

M. Duff
P. Dunham
B. Dupree
L. Durham
A. Easter
C. Ellis

K. Ely
P. Ervin
D. Evans
R. Evans
J. Fairbank
B. Farley

J. Farrer
S. Favorite
M. Ferchen

R. Farrel
C. Ferril
B. Fernen

K. Filbin
P. Fish
B. Fisher

J. Fletcher
D. Flynn
C. Fossum

E. Foyt
J. Fyall
G. Garland

J. Gaswint
L. Gatjens
B. Garrett

J. Garrison
S. Gerfin
A. Gerth

K. Gibbens
C. Glazer
G. Godfrey





A. Goebel
B. Goefschius
K. Goforth



M. Good
L. Grandy
D. Gray



B. Greer
N. Greimes
P. Grieb



C. Grimes
M. Guerra
F. Gullikson



L. Hall
L. Hallert
M. Hamilton



L. Hansen
C. Harp
L. Harper



K. Haugen
R. Hellerstedt
R. Hemenway



P. Henderson
D. Henderson
M. Henderson



G. Heyworth
T. Hollcraft
R. Holmgren
T. Holt
T. Holt
S. Hopkins

S. Hopkins
C. Hoover
M. Horton
M. Hudson
L. Hughes
P. Hunter

C. Husak
S. Ingraham
P. Joentsch
C. Jackson
J. Jacobson
S. Jesmer



K. Jennings
S. Jenson
D. Johnson
J. Johnson
E. Johnson
A. Johnson



L. Johnson
L. Johnson
L. Johnson
L. Johnston
G. Jones
S. Jones



M. Joramo
R. Joslin
L. Julian



N. Karnofski
B. Kennedy
V. Kenyon



K. Key
C. Klebaum
B. King



B. Klemm
T. Klimpel
S. Knutson
P. Kolbeck
J. Karhonen
N. Kristjanson



J. Kroener
L. LaBarge
R. LaBelle
M. LaBelle
K. LaFontaine
L. Lammers



V. Lang
B. Larson
R. Larson
S. Larson
B. Larsson
D. LaRue

R. Lawrence
S. Lee
S. Leighton
J. Levens
N. Librande
B. Lindgren



R. Litterer
J. Lockhart
T. Luce
D. Lyon
S. MacPherson
M. Manning



K. Manus
M. Marcum
S. Marcy



A. Marthaler
D. Martin
R. Matson



S. Matson
C. Mattison
R. Mattison



M. Maxwell
G. McBain
C. McCalman
J. McCalman
P. McCune
K. McDonald



K. McDougall
S. McKenzie
V. McKinney
R. McLain
A. McLeod
M. McManus



B. McQueen
S. McShone
S. Meyer
P. Meyring
L. Michalenko
R. Mickels





B. Miller



D. Miller



P. Miller

R. Miller



R. Miller

R. Mitcham



M. Mooney

T. Moffett



S. Montgomery

D. Mosier



J. Moyes

P. Mulvaney



D. Munson

K. Murray



J. Nelson



J. Nevkirch



C. Nygreen



G. Nilson



B. Narman



L. Northrap



J. Nygren



R. Olin



S. Olson



T. O'Malley



E. Owen



S. Page



C. Palm



M. Parks



E. Parrish



S. Passey



P. Paulson



S. Pearse



S. Pearson



C. Perry



B. Peyton



K. Pitchford



E. Pittman



G. Posenjak





S. Potter
S. Potter
K. Pottruff



D. Power
L. Price
S. Prince



D. Pugmire
P. Queen
S. Quick



D. Ralston
J. Randall
J. Rath



L. Rayburn
L. Reddington
R. Reid



G. Regelin
T. Renfro
G. Rhoades



G. Richmond
W. Ricketts
C. Rieck



V. Riedlinger
D. Riffle
J. Rinehart



J. Roberts
C. Rammel



R. Rose
R. Roper



B. Ross
B. Ross



J. Rough
T. Rowe



L. Rudd
L. Rust



G. Ryals
S. Ryan



D. Sandhop
D. Sateren



N. Savage
L. Savitch



C. Scalf
D. Schick



E. Schoennalz
M. Schulz



M. Schwiger
C. Scott



M. Selmes
G. Selmes



B. Sethores
S. Shans

S. Sheehan
P. Sherman
L. Sherrod



D. Sherwood
H. Shipley
B. Shreve



R. Siedlecki
C. Simon
K. Singhrs



N. Sjoblom
P. Sledge
G. Smith



S. Smith
S. Smith
T. Smith



D. Snyder
S. Sparks
P. Spencer
J. Sprague
T. Spring
T. Springer



R. Springer
J. Stadler
T. Stainbrook
G. Stanford
M. Stave
S. Stebing



R. Steinmetzer
S. Stephens
C. Stoeker
E. Stone
G. Story
G. Summers

K. Svendsen
M. Swartz
B. Swerk
C. Taht
B. Taylor
R. Taylor



R. Tedford
K. Thomas
M. Thomas
M. Thompson
P. Thornbrue
D. Thrasher



S. Tisdell
G. Thornburgh
G. Tomlin
S. Torence
L. Trandum
K. Tufte



C. Turner
M. Undi
R. Vaders

C. Waller
M. Walton



J. Valentine
B. Volley
B. Vanalmkek

J. Wachsmith
R. Waskiewicz



S. VanOsdale
J. Vaughn
C. Wagner

K. Westberg
J. Westerland



C. Wagner
J. Walcker
D. Walker

S. Westflore
R. Weight



R. Walker
W. Wallace
L. Waltmire

S. Whaley
M. Wheelock



B. White
M. White
D. Whittlesy
A. Wicks
B. Wieler



A. Williams
J. Williams
C. Wilmart
W. Winkelkotter
C. Wolf



B. Woolworth
M. Wright
A. Yaros
T. Yates
B. Yuil



19 Faculty 65



DR. HAROLD KLOES
Principal



MR. JERRY KARNOFSKI
Vice-Principal

Motion can be seen everywhere on the Meadowdale campus, but the most important motion is that taking place in the classroom itself. Progress in academic and social activities is essential to the development of the individual student, and each teacher performs his own specific job to achieve this progress.



RICHARD BOGGIO
Senior Counselor



JOHN GRANTIER
Junior Counselor



DARLENE SIMPSON
Sophomore Counselor



RICHARD ANDERSON
English 11



RON BATES
Physical Education



GORDON BERGUM
Chemistry 1, 2



ROBBIN BOSTON
Physics, Algebra



JERE CARY
Woodshop 1, 2, 3



BRUCE COOK
Bookkeeping 1,2; Consumer
Law; Typing 1



WILLIAM CROSSETT
English 10; Drama



Dorothea Niven, Secretary to Principal; Barbara Davison, Instructional Secretary; Ruth Harshberger, Secretary to Counselors; Irene Kefgen, Attendance Secretary; Donna Phillips, Records Secretary.



ROY BOURLIER
Librarian



ROBERT BURTON
Choir; Chorus; Band; Music Theory



MALISENT BUZZARD
Home Economic 3, 4; Child Care



ELEANORA DUCKWORTH
Typing 1, 2; Office Machines, Bookkeeping 1



VIOLA DYCK
Physical Education



PATRICK EASON
World History; German 1, 2



JOHN GARNER
U. S. History; Contemporary Problems



SHIRLEY GILSON
Office Machines; Typing 1, 2; Shorthand 2



CECILE HAMM
English 10, 11



MARCELLA HANSON
Assistant Librarian



MICHAEL HILTON
UICSM 4, 5, Geometry, Math Review.



DUANE HONSBERGER
English 12, College Prep. English,



JAMES HOON
U. S. History, Economics, Reading.



TERRANCE JOHNSON
Electronics 1, 2; Mechanical Drawing.



CLIFFORD KAYS
Math Review, U. S. History, World History.



W. LYNES KING
Speech, World History, Twentieth Century History.



NANCY KNOCKE
English 10, 12.



MARION KOLUDA
English 11, Russian 1, 2; Journalism.



RUDY KOVACEVICH
Art 1, 2, 3, 4, Sculpture, Crafts.



RON LaFRENIERE
Typing 1, Distributive Education.



CAROL HOTCHKISS
Shorthand 1, Notehand, Typing 1, 2, Business English.

PHIL HULL
U. S. History, Washington State History.

MAL JENKINS
UICSM 2, 3, Geometry, Algebra 2.

BRENDA JOHNSON
Typing 1, 2, Shorthand 1.



ERICH KOKER
Orchestra.



RON LEE
World History, U. S. History.

CHARLES LeWARNE
U. S. History, Twentieth Century History.

MERLE LOCKWOOD
Reading.

NANCY McCRACKEN
English 11, Annual, Creative Writing.



MARCIA MC ELVAIN
English 11



MARILYN MURPHY
World History; U. S. History



JACK NEILSEN
Auto Shop



GEORGE NELSON
Geometry; Metal Shop 1, 2, 3



DOLORES NORMAN
Family Living; Boys' Home Economics; Economics &



JAMES NUGENT
Latin 1, 2, 3; World History



MARY OLMSTED
English 12; College Prep English



DON RIDGE
U. S. History; World History



HARRY ROBINSON
UICSM 3; Geometry; Senior Math, Algebra 2



MARILEE RYAN
Notehand; Typing 1, 2



WILMA SCHEEL
English 10; Spanish



J. EDWARD NIEVAARD
Biology; Physiology



LOIS OVERHOLT
Spanish 1, 2, 3



WINIFRED PARRIS
French 1, 2, 3, 4



ED PEPPE
English 10



HORACE PROPST
Physiology; Biology



ELIZABETH SEARS
Biology; Zoology



SHARON WEEKS
Health; Physical Education



RALPH WIGINGTON
English 12; Humanities; College
Prep English



GLEN WILLIAMS
Biology; World History



COOKS

Front row: Lois Rousch, Fern Hill, Velma McNulty, Pat Weight, Irene Einess, Wanda Dodson. **Back row:** Marcella Raymond, Betty Marthaler, Monica Hemenway, Lorraine Schurr, Eva Girvan.

The Busiest Of Them All . . .



CUSTODIANS

Front row: Al Cooke, Anton Weiss, Jim Cornell. **Back row:** Bill Tinkhom, Bill Farr, Bill Pinkstaff, Earl Stockman.

Advertisements



MOST ACTIVE
Lynn Poitras — Mark Mueller

CONGRATULATIONS, GRADS!
Save or Borrow
For a brighter tomorrow
at
WASHINGTON FEDERAL SAVINGS
AND LOAN ASSOCIATION

And

Senior Celebrities



MOST INTELLIGENT
Anita Kain — Jim Gandy



SPIRIT OF MEADOWDALE
Anne Mackie — Bill Lawson

CHIEFS TEE PEE
Open from 10 a.m. until Midnight
"Come paw wow with us
and bring your friends!"
Parents welcome



BEST GROOMED
Carol Beene — George McLaughlin

GARY'S CLOSET
In Lynnwood
"For young men and men who
look young."
Browse around — meet your friends!

STYLE ALUMINUM PRODUCTS
14303 Aurora Ave. N. Seattle, Wn.
Screens, doors, awnings,
storm windows, window sash
Free estimates Em 3-6104



MOST COURTEOUS
Lori Barrett — Jeff Hegland



MOST EASILY EMBARRASSED
Tiloura McCormick — Gary Sharpe

Dick Forsgren's
LYNNWOOD JEWELERS
Lynnwood's Exclusive Elgin Dealer
The Home of "First Love"
and "Courtship Diamonds"

MARVEL MORGAN
 Rexall Drugs
 Open Daily 9 a.m. to 10 p.m.
 James Village in Lynnwood
 Pr 6-1152



PRETTIEST EYES
 Gail Starr — Bill Whiting



SUNNIEST SMILE
 Sherie Jones — Steve Lafoon

PLAYMORE SPORTING GOODS & TOYS
 1124 Aurora Village
 Complete Lines
 Gym clothes, skis, ski wear,
 sporting goods and toys.

TOTEM SHOES
 Lynnwood shopping center
 We specialize in the teen styles
 Open Mon. and Fri. 9 to 9
 Tues. — Wed. — Thurs. — Sat. 9 to 6



MOST INTERESTING WALK
 Cheri Walker — Sid Burns



PRETTIEST HAIR
Susie Miller—George Christ

PHOTOGRAPHY
Specializing in Weddings
and Portraits
Jesse L. Brown
Pr. 8-3303



MOST TALENTED
Linda Ellsworth—John Slattum



CUTEST AND BEST LOOKING
Madelon Seidlecki—Jim Prince



MOST LIKELY TO SUCCEED
Shelly Long — Steve Schroeder



MESIKA SUPPORTERS
Lynnwood Branch Seattle First
National Bank
Ben Franklin Store
Chris's Barber Shop

BEST ATHLETES
Sandy Sparks — Ray Ewing

CAMPUS FLIRTS
Sheila Brown — Pete Clark





CAMPUS CUT-UPS

Kathy Duckworth — Pat Linehan

BROSE'S TIRE SERVICE
 19222 Highway 99 Lynnwood, Wn.
 Pr 6-0154
 Our congratulations to this
 year's graduating class.

STAN'S VARSITY SHOP
 Lynnwood Shopping Center
 Lynnwood, Wash. Pr 8-1202
 "The style shop for male campus wear."



MOST FRIENDLY

Charlatte Will — Greg Lehman



BEST DANCERS

Jan Lindstrom — Dave Greenburger

LYNN VILLAGE FURNITURE CO.
 19215 Highway 99
 Lynnwood, Washington
 Congratulations to the class
 of '65

ECH'S BURNER OILS, INC.
Shell heating oils - Asphalt paving
Furnace Installation and service
Lynnwood, Washington
Pr 8-3124



BEST PERSONALITY AND PHYSIQUE
Rose Clark Menala - Dave Hollcraft

VERN STENSON CHEVRON
5125 168 S.W.
Lynnwood, Washington
Phone 743-0022
Standard Oil Products

KARFSTEDT JEWELER
James Village
Lynnwood, Washington



BEST PERSONALITY
Leslie Bingham - Jeff Johnston


Karfstedt
Jeweler

A weekend of labor at Dag 'n Suds ended a week of Senior Ball fundraisers. (Below)

R.A.N.K. by the junior class aids in money contribution. (Right)



Senior

W E E K



Goerge Christ and the auction brought as much fun as money to the week. (Above)

Dad's Club sponsored a basketball game with Ex-Husky football players and district faculty that brought profit to the seniors. (Right)



